

R3HDM4 Antibody - N-terminal region

Rabbit Polyclonal Antibody

Catalog # AI15711

Product Information

Application	WB
Primary Accession	Q96D70
Other Accession	NM_138774 , NP_620129
Reactivity	Human, Mouse, Rat, Zebrafish, Pig, Dog, Guinea Pig, Bovine
Predicted	Human, Mouse, Rat, Zebrafish, Pig, Dog, Guinea Pig, Bovine
Host	Rabbit
Clonality	Polyclonal
Calculated MW	30350

Additional Information

Gene ID	91300
Alias Symbol	C19orf22
Other Names	R3H domain-containing protein 4, R3HDM4, C19orf22
Format	Liquid. Purified antibody supplied in 1x PBS buffer with 0.09% (w/v) sodium azide and 2% sucrose.
Reconstitution & Storage	Add 50 ul of distilled water. Final anti-R3HDM4 antibody concentration is 1 mg/ml in PBS buffer with 2% sucrose. For longer periods of storage, store at 20°C. Avoid repeat freeze-thaw cycles.
Precautions	R3HDM4 Antibody - N-terminal region is for research use only and not for use in diagnostic or therapeutic procedures.

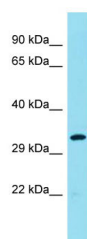
Protein Information

Name	R3HDM4
Synonyms	C19orf22
Cellular Location	Nucleus.

References

Van Damme P., et al. Proc. Natl. Acad. Sci. U.S.A. 109:12449-12454(2012).

Images



Host: Rabbit
Target Name: R3HDM4
Sample Tissue: MCF7 Whole cell lysate
S
Antibody Dilution: 1.0µg/ml

Please note: All products are 'FOR RESEARCH USE ONLY. NOT FOR USE IN DIAGNOSTIC OR THERAPEUTIC PROCEDURES'.