

C1orf105 Antibody - C-terminal region

Rabbit Polyclonal Antibody

Catalog # AI15714

Product Information

Application	WB
Primary Accession	O95561
Other Accession	NM_139240 , NP_640333
Reactivity	Human
Predicted	Human
Host	Rabbit
Clonality	Polyclonal
Calculated MW	21209

Additional Information

Gene ID	92346
Other Names	Uncharacterized protein C1orf105, C1orf105
Format	Liquid. Purified antibody supplied in 1x PBS buffer with 0.09% (w/v) sodium azide and 2% sucrose.
Reconstitution & Storage	Add 50 µl of distilled water. Final Anti-C1orf105 antibody concentration is 1 mg/ml in PBS buffer with 2% sucrose. For longer periods of storage, store at -20°C. Avoid repeat freeze-thaw cycles.
Precautions	C1orf105 Antibody - C-terminal region is for research use only and not for use in diagnostic or therapeutic procedures.

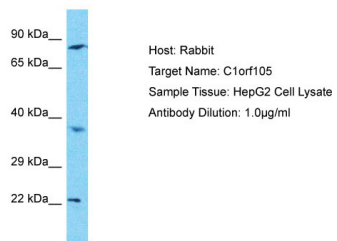
Protein Information

Name	C1orf105
-------------	----------

References

Rhodes S., et al. Submitted (JAN-1999) to the EMBL/GenBank/DDBJ databases.
Gregory S.G., et al. Nature 441:315-321(2006).

Images



Host: Rabbit
Target Name: C1orf105
Sample Tissue: HepG2 Whole cell lysate
S
Antibody Dilution: 1.0µg/ml

Please note: All products are 'FOR RESEARCH USE ONLY. NOT FOR USE IN DIAGNOSTIC OR THERAPEUTIC PROCEDURES'.