

ARMC6 Antibody - N-terminal region

Rabbit Polyclonal Antibody

Catalog # AI15717

Product Information

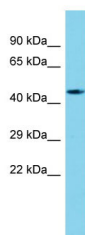
Application	WB
Primary Accession	Q6NXE6-2
Other Accession	NM_033415 , NP_219483
Reactivity	Human, Mouse, Rat, Rabbit, Zebrafish, Pig, Dog, Guinea Pig, Horse, Bovine
Predicted	Human, Mouse, Rat, Rabbit, Zebrafish, Pig, Dog, Guinea Pig, Horse, Bovine
Host	Rabbit
Clonality	Polyclonal
Calculated MW	51 kDa

Additional Information

Alias Symbol	R30923_1
Format	Liquid. Purified antibody supplied in 1x PBS buffer with 0.09% (w/v) sodium azide and 2% sucrose.
Reconstitution & Storage	Add 50 ul of distilled water. Final anti-ARMC6 antibody concentration is 1 mg/ml in PBS buffer with 2% sucrose. For longer periods of storage, store at 20°C. Avoid repeat freeze-thaw cycles.
Precautions	ARMC6 Antibody - N-terminal region is for research use only and not for use in diagnostic or therapeutic procedures.

Protein Information

Images



Host: Rabbit
Target Name: ARMC6
Sample Tissue: Fetal Brain lysates
Antibody Dilution: 1.0µg/ml