

L3HYPDH Antibody - C-terminal region

Rabbit Polyclonal Antibody

Catalog # AI15719

Product Information

Application	WB
Primary Accession	Q96EM0
Other Accession	NP_653182
Reactivity	Human
Host	Rabbit
Clonality	Polyclonal
Calculated MW	38138

Additional Information

Gene ID	112849
Alias Symbol Other Names	L3HYPDH, C14orf149, Trans-L-3-hydroxyproline dehydratase, 4.2.1.77, Trans-3-hydroxy-L-proline dehydratase, L3HYPDH, C14orf149
Format	Liquid. Purified antibody supplied in 1x PBS buffer with 0.09% (w/v) sodium azide and 2% sucrose.
Reconstitution & Storage	Add 50 μ l of distilled water. Final Anti-L3HYPDH antibody concentration is 1 mg/ml in PBS buffer with 2% sucrose. For longer periods of storage, store at -20°C. Avoid repeat freeze-thaw cycles.
Precautions	L3HYPDH Antibody - C-terminal region is for research use only and not for use in diagnostic or therapeutic procedures.

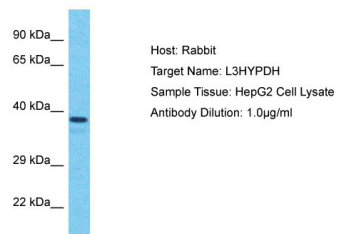
Protein Information

Name	L3HYPDH
Synonyms	C14orf149
Function	Catalyzes the dehydration of trans-3-hydroxy-L-proline to Delta(1)-pyrroline-2-carboxylate (Pyr2C). May be required to degrade trans-3-hydroxy-L-proline from the diet and originating from the degradation of proteins such as collagen-IV that contain it.
Tissue Location	Ubiquitously expressed.

References

Ota T.,et al.Nat. Genet. 36:40-45(2004).
Heilig R.,et al.Nature 421:601-607(2003).
Burkard T.R.,et al.BMC Syst. Biol. 5:17-17(2011).
Visser W.F.,et al.J. Biol. Chem. 287:21654-21662(2012).

Images



Host: Rabbit
Target Name: L3HYDPH
Sample Tissue: HepG2 Whole Cell lysates
Antibody Dilution: 1.0µg/ml

Please note: All products are 'FOR RESEARCH USE ONLY. NOT FOR USE IN DIAGNOSTIC OR THERAPEUTIC PROCEDURES'.