

# 1810019J16Rik Antibody - middle region

Rabbit Polyclonal Antibody

Catalog # AI15729

## Product Information

---

<b>Application</b>	WB
<b>Primary Accession</b>	<a href="#">A2A9F4</a>
<b>Other Accession</b>	<a href="#">NM_001083916</a> , <a href="#">NP_001077385</a>
<b>Reactivity</b>	Human, Mouse, Rat, Rabbit, Dog, Guinea Pig, Horse, Bovine
<b>Predicted</b>	Human, Mouse, Rat, Rabbit, Pig, Dog, Guinea Pig, Horse, Bovine
<b>Host</b>	Rabbit
<b>Clonality</b>	Polyclonal
<b>Calculated MW</b>	43496

## Additional Information

---

<b>Gene ID</b>	69073
<b>Other Names</b>	Keratinocyte differentiation factor 1, Kdf1
<b>Format</b>	Liquid. Purified antibody supplied in 1x PBS buffer with 0.09% (w/v) sodium azide and 2% sucrose.
<b>Reconstitution &amp; Storage</b>	Add 50 ul of distilled water. Final anti-1810019J16Rik antibody concentration is 1 mg/ml in PBS buffer with 2% sucrose. For longer periods of storage, store at 20°C. Avoid repeat freeze-thaw cycles.
<b>Precautions</b>	1810019J16Rik Antibody - middle region is for research use only and not for use in diagnostic or therapeutic procedures.

## Protein Information

---

<b>Name</b>	Kdf1
<b>Function</b>	Plays a role in the regulation of the epidermis formation during early development. Required both as an inhibitor of basal cell proliferation and a promoter of differentiation of basal progenitor cell progeny.
<b>Cellular Location</b>	Cytoplasm. Cell junction. Note=Localized at cell borders in single layered keratinocytes. Localized at cell borders in the basal and spinous layers but is more diffusely localized in the granular layer. Colocalized with actin near the cell membrane, especially in cellular protrusions

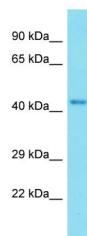
## References

---

Carninci P.,et al.Science 309:1559-1563(2005).  
Church D.M.,et al.PLoS Biol. 7:E1000112-E1000112(2009).  
Lee S.,et al.Dev. Biol. 383:201-213(2013).

## Images

---



Host: Rabbit  
Target Name: 1810019J16Rik  
Sample Tissue: Mouse Liver lysates  
Antibody Dilution: 1.0µg/ml

Please note: All products are 'FOR RESEARCH USE ONLY. NOT FOR USE IN DIAGNOSTIC OR THERAPEUTIC PROCEDURES'.