

# C9orf41 Antibody - middle region

Rabbit Polyclonal Antibody

Catalog # AI15732

## Product Information

---

<b>Application</b>	WB
<b>Primary Accession</b>	<a href="#">Q8N4J0</a>
<b>Other Accession</b>	<a href="#">NM_152420</a> , <a href="#">NP_689633</a>
<b>Reactivity</b>	Human, Mouse, Rat, Rabbit, Zebrafish, Pig, Dog, Guinea Pig, Horse, Bovine, Yeast
<b>Predicted</b>	Human, Mouse, Rat, Rabbit, Zebrafish, Pig, Dog, Guinea Pig, Horse, Bovine, Yeast
<b>Host</b>	Rabbit
<b>Clonality</b>	Polyclonal
<b>Calculated MW</b>	47186

## Additional Information

---

<b>Gene ID</b>	138199
<b>Other Names</b>	UPF0586 protein C9orf41, C9orf41
<b>Format</b>	Liquid. Purified antibody supplied in 1x PBS buffer with 0.09% (w/v) sodium azide and 2% sucrose.
<b>Reconstitution &amp; Storage</b>	Add 50 ul of distilled water. Final anti-C9orf41 antibody concentration is 1 mg/ml in PBS buffer with 2% sucrose. For longer periods of storage, store at 20°C. Avoid repeat freeze-thaw cycles.
<b>Precautions</b>	C9orf41 Antibody - middle region is for research use only and not for use in diagnostic or therapeutic procedures.

## Protein Information

---

<b>Name</b>	CARNMT1 ( <a href="#">HGNC:23435</a> )
<b>Function</b>	N-methyltransferase that catalyzes the formation of anserine (beta-alanyl-N(Pi)-methyl-L-histidine) from carnosine. Anserine, a methylated derivative of carnosine (beta-alanyl-L-histidine), is an abundant constituent of vertebrate skeletal muscles. Also methylates other L-histidine-containing di- and tripeptides such as Gly-Gly-His, Gly-His and homocarnosine (GABA-His).
<b>Cellular Location</b>	Cytoplasm, cytosol. Nucleus
<b>Tissue Location</b>	Expressed at higher level in kidney. Expressed at lower level in brain and skeletal muscle

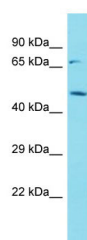
## References

---

Humphray S.J.,et al.Nature 429:369-374(2004).  
Bechtel S.,et al.BMC Genomics 8:399-399(2007).  
Ota T.,et al.Nat. Genet. 36:40-45(2004).  
Burkard T.R.,et al.BMC Syst. Biol. 5:17-17(2011).

## Images

---



Host: Rabbit  
Target Name: C9orf41  
Sample Tissue: U937 Whole cell lysate  
S  
Antibody Dilution: 1.0µg/ml

Please note: All products are 'FOR RESEARCH USE ONLY. NOT FOR USE IN DIAGNOSTIC OR THERAPEUTIC PROCEDURES'.