

# C11orf40 Antibody - N-terminal region

Rabbit Polyclonal Antibody

Catalog # AI15734

## Product Information

---

<b>Application</b>	WB
<b>Primary Accession</b>	<a href="#">Q8WZ69</a>
<b>Other Accession</b>	<a href="#">NM_144663</a> , <a href="#">NP_653264</a>
<b>Reactivity</b>	Human
<b>Predicted</b>	Human
<b>Host</b>	Rabbit
<b>Clonality</b>	Polyclonal
<b>Calculated MW</b>	24620

## Additional Information

---

<b>Alias Symbol</b>	41944
<b>Other Names</b>	Putative uncharacterized protein C11orf40, Ro/SSA1-related protein, C11orf40, NOV1
<b>Format</b>	Liquid. Purified antibody supplied in 1x PBS buffer with 0.09% (w/v) sodium azide and 2% sucrose.
<b>Reconstitution &amp; Storage</b>	Add 50 ul of distilled water. Final anti-C11orf40 antibody concentration is 1 mg/ml in PBS buffer with 2% sucrose. For longer periods of storage, store at 20°C. Avoid repeat freeze-thaw cycles.
<b>Precautions</b>	C11orf40 Antibody - N-terminal region is for research use only and not for use in diagnostic or therapeutic procedures.

## Protein Information

---

<b>Name</b>	C11orf40
<b>Synonyms</b>	NOV1

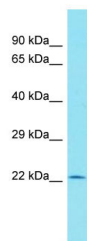
## References

---

Rhodes D.A., et al. Submitted (OCT-2001) to the EMBL/GenBank/DDBJ databases.

## Images

---



Host: Rabbit  
Target Name: C11orf40  
Sample Tissue: Hela Whole cell lysate  
S  
Antibody Dilution: 1.0µg/ml

Please note: All products are 'FOR RESEARCH USE ONLY. NOT FOR USE IN DIAGNOSTIC OR THERAPEUTIC PROCEDURES'.