

CCDC13 Antibody - N-terminal region

Rabbit Polyclonal Antibody

Catalog # AI15742

Product Information

Application	WB
Primary Accession	Q8IYE1
Other Accession	NM_144719 , NP_653320
Reactivity	Human, Horse, Bovine
Predicted	Human, Horse, Bovine
Host	Rabbit
Clonality	Polyclonal
Calculated MW	80884

Additional Information

Gene ID	152206
Other Names	Coiled-coil domain-containing protein 13, CCDC13 (HGNC:26358)
Format	Liquid. Purified antibody supplied in 1x PBS buffer with 0.09% (w/v) sodium azide and 2% sucrose.
Reconstitution & Storage	Add 50 ul of distilled water. Final anti-CCDC13 antibody concentration is 1 mg/ml in PBS buffer with 2% sucrose. For longer periods of storage, store at 20°C. Avoid repeat freeze-thaw cycles.
Precautions	CCDC13 Antibody - N-terminal region is for research use only and not for use in diagnostic or therapeutic procedures.

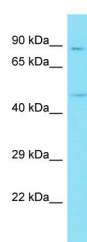
Protein Information

Name	CCDC13 (HGNC:26358)
Function	Required for primary cilia formation and promotes the localization of the ciliopathy protein BBS4 to both centriolar satellites and cilia.
Cellular Location	Cytoplasm, cytoskeleton, microtubule organizing center, centrosome, centriolar satellite Cytoplasm, cytoskeleton, cilium basal body

References

Muzny D.M.,et al.Nature 440:1194-1198(2006).
Staples C.J.,et al.J. Cell Sci. 127:2910-2919(2014).

Images



Host: Rabbit
Target Name: CCDC13
Sample Tissue: Fetal Liver lysates
Antibody Dilution: 1.0µg/ml

Please note: All products are 'FOR RESEARCH USE ONLY. NOT FOR USE IN DIAGNOSTIC OR THERAPEUTIC PROCEDURES'.