

C6orf136 Antibody - C-terminal region

Rabbit Polyclonal Antibody

Catalog # AI15749

Product Information

Application	WB
Primary Accession	Q5SQH8
Other Accession	NM_001109938 , NP_001103408
Reactivity	Human, Rat, Rabbit, Pig, Dog, Guinea Pig, Horse, Bovine
Predicted	Human, Rat, Rabbit, Pig, Dog, Guinea Pig, Horse, Bovine
Host	Rabbit
Clonality	Polyclonal
Calculated MW	35794

Additional Information

Gene ID	221545
Other Names	Uncharacterized protein C6orf136, C6orf136
Format	Liquid. Purified antibody supplied in 1x PBS buffer with 0.09% (w/v) sodium azide and 2% sucrose.
Reconstitution & Storage	Add 50 ul of distilled water. Final anti-C6orf136 antibody concentration is 1 mg/ml in PBS buffer with 2% sucrose. For longer periods of storage, store at 20°C. Avoid repeat freeze-thaw cycles.
Precautions	C6orf136 Antibody - C-terminal region is for research use only and not for use in diagnostic or therapeutic procedures.

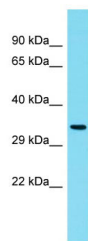
Protein Information

Name	C6orf136
-------------	----------

References

Ota T., et al. Nat. Genet. 36:40-45(2004).
Mungall A.J., et al. Nature 425:805-811(2003).

Images



Host: Rabbit
Target Name: C6orf136
Sample Tissue: Fetal Kidney lysates
Antibody Dilution: 1.0µg/ml

Please note: All products are 'FOR RESEARCH USE ONLY. NOT FOR USE IN DIAGNOSTIC OR THERAPEUTIC PROCEDURES'.