

CDRT15L2 Antibody - N-terminal region

Rabbit Polyclonal Antibody

Catalog # AI15753

Product Information

Application	WB
Primary Accession	A8MXV6
Other Accession	NM_001190790 , NP_001177719
Reactivity	Human
Predicted	Human
Host	Rabbit
Clonality	Polyclonal
Calculated MW	30100

Additional Information

Gene ID	256223
Other Names	CMT1A duplicated region transcript 15 protein-like protein, CDRT15L2
Format	Liquid. Purified antibody supplied in 1x PBS buffer with 0.09% (w/v) sodium azide and 2% sucrose.
Reconstitution & Storage	Add 50 ul of distilled water. Final anti-CDRT15L2 antibody concentration is 1 mg/ml in PBS buffer with 2% sucrose. For longer periods of storage, store at 20°C. Avoid repeat freeze-thaw cycles.
Precautions	CDRT15L2 Antibody - N-terminal region is for research use only and not for use in diagnostic or therapeutic procedures.

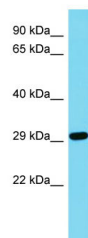
Protein Information

Name	CDRT15L2
Cellular Location	Membrane; Single-pass membrane protein

References

Zody M.C., et al. Nature 440:1045-1049(2006).
Hillier L., et al. Submitted (MAR-2000) to the EMBL/GenBank/DDBJ databases.

Images



Host: Rabbit
Target Name: CDRT15L2
Sample Tissue: Jurkat Whole cell lysate
S
Antibody Dilution: 1.0µg/ml

Please note: All products are 'FOR RESEARCH USE ONLY. NOT FOR USE IN DIAGNOSTIC OR THERAPEUTIC PROCEDURES'.