

CCDC153 Antibody - middle region

Rabbit Polyclonal Antibody

Catalog # AI15754

Product Information

Application	WB
Primary Accession	Q494R4
Other Accession	NM_001145018 , NP_001138490
Reactivity	Human, Mouse, Rabbit, Bovine
Predicted	Human, Mouse, Rabbit, Bovine
Host	Rabbit
Clonality	Polyclonal
Calculated MW	23858

Additional Information

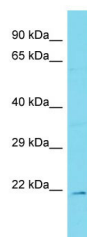
Gene ID	283152
Other Names	Coiled-coil domain-containing protein 153, CCDC153
Format	Liquid. Purified antibody supplied in 1x PBS buffer with 0.09% (w/v) sodium azide and 2% sucrose.
Reconstitution & Storage	Add 50 ul of distilled water. Final anti-CCDC153 antibody concentration is 1 mg/ml in PBS buffer with 2% sucrose. For longer periods of storage, store at 20°C. Avoid repeat freeze-thaw cycles.
Precautions	CCDC153 Antibody - middle region is for research use only and not for use in diagnostic or therapeutic procedures.

Protein Information

Name	DRC12 (HGNC:27446)
Synonyms	CCDC153
Function	Component of the nexin-dynein regulatory complex (N-DRC), a key regulator of ciliary/flagellar motility which maintains the alignment and integrity of the distal axoneme and regulates microtubule sliding in motile axonemes.
Cellular Location	Cytoplasm, cytoskeleton, flagellum axoneme {ECO:0000250 UniProtKB:Q22RH5}

References

Images



Host: Rabbit
Target Name: CCDC153
Sample Tissue: Hela Whole cell lysate
S
Antibody Dilution: 1.0µg/ml

Please note: All products are 'FOR RESEARCH USE ONLY. NOT FOR USE IN DIAGNOSTIC OR THERAPEUTIC PROCEDURES'.