

SIGLECL1 Antibody - C-terminal region

Rabbit Polyclonal Antibody

Catalog # AI15758

Product Information

Application	WB
Primary Accession	Q8N7X8
Other Accession	NM_173635 , NP_775906
Reactivity	Human, Yeast
Predicted	Human, Yeast
Host	Rabbit
Clonality	Polyclonal
Calculated MW	21283

Additional Information

Gene ID	284369
Alias Symbol	C19orf75
Other Names	SIGLEC family-like protein 1, SIGLECL1, C19orf75
Format	Liquid. Purified antibody supplied in 1x PBS buffer with 0.09% (w/v) sodium azide and 2% sucrose.
Reconstitution & Storage	Add 50 ul of distilled water. Final anti-SIGLECL1 antibody concentration is 1 mg/ml in PBS buffer with 2% sucrose. For longer periods of storage, store at 20°C. Avoid repeat freeze-thaw cycles.
Precautions	SIGLECL1 Antibody - C-terminal region is for research use only and not for use in diagnostic or therapeutic procedures.

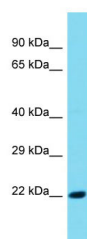
Protein Information

Name	SIGLECL1
Synonyms	C19orf75
Cellular Location	Membrane; Single-pass membrane protein

References

Ota T.,et al.Nat. Genet. 36:40-45(2004).
Mural R.J.,et al.Submitted (JUL-2005) to the EMBL/GenBank/DDBJ databases.

Images



Host: Rabbit
Target Name: SIGLECL1
Sample Tissue: Fetal Kidney lysates
Antibody Dilution: 1.0µg/ml

Please note: All products are 'FOR RESEARCH USE ONLY. NOT FOR USE IN DIAGNOSTIC OR THERAPEUTIC PROCEDURES'.