

# C1orf228 Antibody - N-terminal region

Rabbit Polyclonal Antibody

Catalog # AI15761

## Product Information

---

<b>Application</b>	WB
<b>Primary Accession</b>	<a href="#">Q6PIY5</a>
<b>Other Accession</b>	<a href="#">NM_001145636</a> , <a href="#">NP_001139108</a>
<b>Reactivity</b>	Human, Mouse, Rat, Rabbit, Dog, Guinea Pig, Horse, Bovine
<b>Predicted</b>	Human, Mouse, Rat, Rabbit, Pig, Dog, Guinea Pig, Horse, Bovine
<b>Host</b>	Rabbit
<b>Clonality</b>	Polyclonal
<b>Calculated MW</b>	48855

## Additional Information

---

<b>Gene ID</b>	339541
<b>Alias Symbol</b>	NCRNA00082, p40
<b>Other Names</b>	Uncharacterized protein C1orf228, p40, C1orf228, NCRNA00082
<b>Format</b>	Liquid. Purified antibody supplied in 1x PBS buffer with 0.09% (w/v) sodium azide and 2% sucrose.
<b>Reconstitution &amp; Storage</b>	Add 50 ul of distilled water. Final anti-C1orf228 antibody concentration is 1 mg/ml in PBS buffer with 2% sucrose. For longer periods of storage, store at 20°C. Avoid repeat freeze-thaw cycles.
<b>Precautions</b>	C1orf228 Antibody - N-terminal region is for research use only and not for use in diagnostic or therapeutic procedures.

## Protein Information

---

<b>Name</b>	ARMH1 ( <a href="#">HGNC:34345</a> )
<b>Synonyms</b>	C1orf228, NCRNA00082

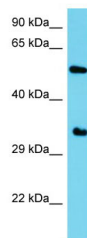
## References

---

Mural R.J.,et al.Submitted (SEP-2005) to the EMBL/GenBank/DDBJ databases.  
Heese K.,et al.Submitted (MAR-2003) to the EMBL/GenBank/DDBJ databases.

## Images

---



Host: Rabbit  
Target Name: C1orf228  
Sample Tissue: HepG2 Whole cell lysate  
S  
Antibody Dilution: 1.0µg/ml

Please note: All products are 'FOR RESEARCH USE ONLY. NOT FOR USE IN DIAGNOSTIC OR THERAPEUTIC PROCEDURES'.