

NUGGC Antibody - C-terminal region

Rabbit Polyclonal Antibody

Catalog # AI15769

Product Information

Application	WB
Primary Accession	Q68CJ6
Other Accession	NM_001010906NP_001010906
Reactivity	Human, Rabbit, Pig, Dog, Horse, Bovine
Predicted	Human, Rabbit, Pig, Dog, Horse, Bovine
Host	Rabbit
Clonality	Polyclonal
Calculated MW	91132

Additional Information

Gene ID	389643
Alias Symbol	C8orf80, SLIP-GC
Other Names	Nuclear GTPase SLIP-GC, 3.6.1.-, Speckled-like pattern in the germinal center, NUGGC, C8orf80
Format	Liquid. Purified antibody supplied in 1x PBS buffer with 0.09% (w/v) sodium azide and 2% sucrose.
Reconstitution & Storage	Add 50 ul of distilled water. Final anti-NUGGC antibody concentration is 1 mg/ml in PBS buffer with 2% sucrose. For longer periods of storage, store at 20°C. Avoid repeat freeze-thaw cycles.
Precautions	NUGGC Antibody - C-terminal region is for research use only and not for use in diagnostic or therapeutic procedures.

Protein Information

Name	NUGGC
Synonyms	C8orf80
Function	Nuclear GTPase found in germinal center B-cells, where it may inhibit function of the activation-induced cytidine deaminase AICDA (PubMed: 19734146). Reduces somatic hypermutation in B-cells which may enhance genome stability (By similarity).
Cellular Location	Nucleus speckle.
Tissue Location	Expressed in germinal center B-cell and in lymphomas derived from germinal

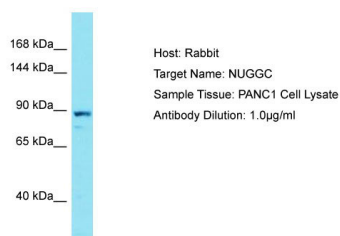
Background

Plays a role as replication-related GTPase protein in germinal center B-cell.

References

Nusbaum C.,et al.Nature 439:331-335(2006).
Yamada S.,et al.Oncogene 23:5901-5911(2004).
Ota T.,et al.Nat. Genet. 36:40-45(2004).
Richter K.,et al.J. Biol. Chem. 284:30652-30661(2009).

Images



Host: Rabbit
Target Name: NUGGC
Sample Tissue: PANC1 Cell Lysate
Antibody Dilution: 1.0µg/ml

Host: Rabbit
Target Name: NUGGC
Sample Tissue: PANC1 Whole cell lysate
S
Antibody Dilution: 1.0µg/ml

Please note: All products are 'FOR RESEARCH USE ONLY. NOT FOR USE IN DIAGNOSTIC OR THERAPEUTIC PROCEDURES'.