

EFR3B Antibody - C-terminal region

Rabbit Polyclonal Antibody

Catalog # AI15810

Product Information

Application	WB
Primary Accession	Q9Y2G0
Other Accession	NM_014971 , NP_055786
Reactivity	Human, Mouse, Rat, Rabbit, Dog, Guinea Pig, Horse, Bovine
Predicted	Human, Mouse, Rat, Rabbit, Pig, Dog, Guinea Pig, Horse, Bovine
Host	Rabbit
Clonality	Polyclonal
Calculated MW	92487

Additional Information

Gene ID	22979
Alias Symbol	KIAA0953
Other Names	Protein EFR3 homolog B, EFR3B, KIAA0953
Format	Liquid. Purified antibody supplied in 1x PBS buffer with 0.09% (w/v) sodium azide and 2% sucrose.
Reconstitution & Storage	Add 50 ul of distilled water. Final anti-EFR3B antibody concentration is 1 mg/ml in PBS buffer with 2% sucrose. For longer periods of storage, store at 20°C. Avoid repeat freeze-thaw cycles.
Precautions	EFR3B Antibody - C-terminal region is for research use only and not for use in diagnostic or therapeutic procedures.

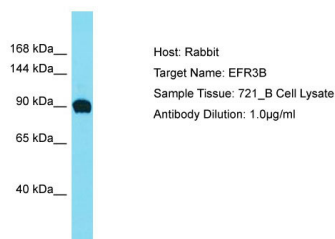
Protein Information

Name	EFR3B (HGNC:29155)
Function	Component of a complex required to localize phosphatidylinositol 4-kinase (PI4K) to the plasma membrane (PubMed: 23229899 , PubMed: 25608530 , PubMed: 26571211). The complex acts as a regulator of phosphatidylinositol 4-phosphate (PtdIns(4)P) synthesis (Probable). In the complex, EFR3B probably acts as the membrane-anchoring component (PubMed: 23229899). Also involved in responsiveness to G-protein-coupled receptors; it is however unclear whether this role is direct or indirect (PubMed: 25380825).
Cellular Location	Cell membrane; Lipid-anchor. Cytoplasm, cytosol. Note=Palmitoylation anchors the protein to the plasma membrane (PubMed: 23229899 , PubMed: 25380825). A small amount is observed in the cytosol

References

Nagase T.,et al.DNA Res. 6:63-70(1999).
Hillier L.W.,et al.Nature 434:724-731(2005).
Mural R.J.,et al.Submitted (SEP-2005) to the EMBL/GenBank/DDBJ databases.
Mayya V.,et al.Sci. Signal. 2:RA46-RA46(2009).
Olsen J.V.,et al.Sci. Signal. 3:RA3-RA3(2010).

Images



Host: Rabbit
Target Name: EFR3B
Sample Tissue: 721_B Whole cell lysate
S
Antibody Dilution: 1.0µg/mlEFR3B is strongly supported
by BioGPS gene expression data to be expressed in
Human 721_B cells

Please note: All products are 'FOR RESEARCH USE ONLY. NOT FOR USE IN DIAGNOSTIC OR THERAPEUTIC PROCEDURES'.