

# FAM26E Antibody - middle region

Rabbit Polyclonal Antibody

Catalog # AI15817

## Product Information

---

<b>Application</b>	WB
<b>Primary Accession</b>	<a href="#">Q8N5C1</a>
<b>Other Accession</b>	<a href="#">NM_153711</a> , <a href="#">NP_714922</a>
<b>Reactivity</b>	Human, Mouse, Rat, Rabbit, Dog, Guinea Pig, Horse, Bovine
<b>Predicted</b>	Human, Mouse, Rat, Rabbit, Pig, Dog, Guinea Pig, Horse, Bovine
<b>Host</b>	Rabbit
<b>Clonality</b>	Polyclonal
<b>Calculated MW</b>	35170

## Additional Information

---

<b>Gene ID</b>	254228
<b>Alias Symbol</b>	C6orf188, dj493F7.3
<b>Other Names</b>	Protein FAM26E, FAM26E, C6orf188
<b>Format</b>	Liquid. Purified antibody supplied in 1x PBS buffer with 0.09% (w/v) sodium azide and 2% sucrose.
<b>Reconstitution &amp; Storage</b>	Add 50 ul of distilled water. Final anti-FAM26E antibody concentration is 1 mg/ml in PBS buffer with 2% sucrose. For longer periods of storage, store at 20°C. Avoid repeat freeze-thaw cycles.
<b>Precautions</b>	FAM26E Antibody - middle region is for research use only and not for use in diagnostic or therapeutic procedures.

## Protein Information

---

<b>Name</b>	CALHM5 ( <a href="#">HGNC:21568</a> )
<b>Synonyms</b>	C6orf188, FAM26E
<b>Function</b>	May assemble to form large pore channels with gating and ion conductance likely regulated by membrane lipids.
<b>Cellular Location</b>	Membrane; Multi-pass membrane protein

## Background

---

Pore-forming subunit of a voltage-gated ion channel.

## References

---

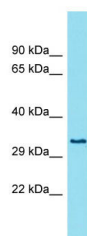
Ota T.,et al.Nat. Genet. 36:40-45(2004).

Mungall A.J.,et al.Nature 425:805-811(2003).

Mural R.J.,et al.Submitted (SEP-2005) to the EMBL/GenBank/DDBJ databases.

## Images

---



Host: Rabbit

Target Name: FAM26E

Sample Tissue: Fetal Lung lysates

Antibody Dilution: 1.0µg/ml

Please note: All products are 'FOR RESEARCH USE ONLY. NOT FOR USE IN DIAGNOSTIC OR THERAPEUTIC PROCEDURES'.