

# PCED1B Antibody - C-terminal region

Rabbit Polyclonal Antibody

Catalog # AI15822

## Product Information

---

<b>Application</b>	WB
<b>Primary Accession</b>	<a href="#">Q96HM7</a>
<b>Other Accession</b>	<a href="#">NM_138371</a> , <a href="#">NP_612380</a>
<b>Reactivity</b>	Human
<b>Predicted</b>	Human
<b>Host</b>	Rabbit
<b>Clonality</b>	Polyclonal
<b>Calculated MW</b>	49727

## Additional Information

---

<b>Gene ID</b>	91523
<b>Alias Symbol</b>	FAM113B
<b>Other Names</b>	PC-esterase domain-containing protein 1B, Protein FAM113B, PCED1B, FAM113B
<b>Format</b>	Liquid. Purified antibody supplied in 1x PBS buffer with 0.09% (w/v) sodium azide and 2% sucrose.
<b>Reconstitution &amp; Storage</b>	Add 50 ul of distilled water. Final anti-PCED1B antibody concentration is 1 mg/ml in PBS buffer with 2% sucrose. For longer periods of storage, store at 20°C. Avoid repeat freeze-thaw cycles.
<b>Precautions</b>	PCED1B Antibody - C-terminal region is for research use only and not for use in diagnostic or therapeutic procedures.

## Protein Information

---

<b>Name</b>	PCED1B ( <a href="#">HGNC:28255</a> )
<b>Synonyms</b>	FAM113B

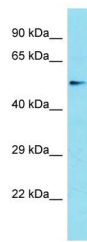
## References

---

Mural R.J.,et al.Submitted (JUL-2005) to the EMBL/GenBank/DDBJ databases.

## Images

---



Host: Rabbit  
Target Name: PCED1B  
Sample Tissue: Jurkat Whole cell lysate  
S  
Antibody Dilution: 1.0µg/ml

Please note: All products are 'FOR RESEARCH USE ONLY. NOT FOR USE IN DIAGNOSTIC OR THERAPEUTIC PROCEDURES'.