

# FOLH1B Antibody - middle region

Rabbit Polyclonal Antibody

Catalog # AI15838

## Product Information

---

<b>Application</b>	WB
<b>Primary Accession</b>	<a href="#">Q9HBA9</a>
<b>Other Accession</b>	<a href="#">NM_153696</a> , <a href="#">NP_710163</a>
<b>Reactivity</b>	Human, Mouse, Rat, Rabbit, Dog, Guinea Pig, Horse, Bovine
<b>Predicted</b>	Human, Mouse, Rat, Rabbit, Pig, Dog, Guinea Pig, Horse, Bovine
<b>Host</b>	Rabbit
<b>Clonality</b>	Polyclonal
<b>Calculated MW</b>	50045

## Additional Information

---

<b>Alias Symbol</b>	FOLH2, FOLHP, GCP3, GCPIII, PSM, PSMA-LIKE, PSMAL
<b>Other Names</b>	Putative N-acetylated-alpha-linked acidic dipeptidase, NAALADase, 3.4.-., Cell growth-inhibiting gene 26 protein, Prostate-specific membrane antigen-like protein, Putative folate hydrolase 1B, FOLH1B, PSMAL
<b>Format</b>	Liquid. Purified antibody supplied in 1x PBS buffer with 0.09% (w/v) sodium azide and 2% sucrose.
<b>Reconstitution &amp; Storage</b>	Add 50 ul of distilled water. Final anti-FOLH1B antibody concentration is 1 mg/ml in PBS buffer with 2% sucrose. For longer periods of storage, store at 20°C. Avoid repeat freeze-thaw cycles.
<b>Precautions</b>	FOLH1B Antibody - middle region is for research use only and not for use in diagnostic or therapeutic procedures.

## Protein Information

---

<b>Name</b>	FOLH1B
<b>Synonyms</b>	PSMAL
<b>Function</b>	Has both folate hydrolase and N-acetylated-alpha-linked- acidic dipeptidase (NAALADase) activity.
<b>Cellular Location</b>	Cytoplasm.
<b>Tissue Location</b>	Kidney and liver. Not expressed in the prostate.

## Background

---

Has both folate hydrolase and N-acetylated-alpha-linked- acidic dipeptidase (NAALADase) activity.

## References

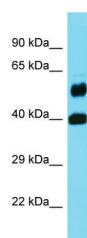
---

O'Keefe D.S.,et al.Prostate 58:200-210(2004).

Kim J.W.,et al.Submitted (FEB-2004) to the EMBL/GenBank/DDBJ databases.

## Images

---



Host: Rabbit

Target Name: FOLH1B

Sample Tissue: Fetal Brain lysates

Antibody Dilution: 1.0µg/ml

Please note: All products are 'FOR RESEARCH USE ONLY. NOT FOR USE IN DIAGNOSTIC OR THERAPEUTIC PROCEDURES'.