

GPR89A Antibody - C-terminal region

Rabbit Polyclonal Antibody

Catalog # AI15844

Product Information

Application	WB
Primary Accession	B7ZAQ6
Other Accession	NM_016334 , NP_057418
Reactivity	Human, Mouse, Rat, Dog, Guinea Pig, Horse, Bovine
Predicted	Human, Mouse, Rat, Pig, Dog, Guinea Pig, Horse, Bovine
Host	Rabbit
Clonality	Polyclonal
Calculated MW	52917

Additional Information

Gene ID	51463;653519
Alias Symbol	GPHR, GPR89, SH120
Other Names	Golgi pH regulator A, Protein GPR89A, Putative MAPK-activating protein PM01, Putative NF-kappa-B-activating protein 90, GPR89A, GPHRA, GPR89, SH120
Format	Liquid. Purified antibody supplied in 1x PBS buffer with 0.09% (w/v) sodium azide and 2% sucrose.
Reconstitution & Storage	Add 50 ul of distilled water. Final anti-GPR89A antibody concentration is 1 mg/ml in PBS buffer with 2% sucrose. For longer periods of storage, store at 20°C. Avoid repeat freeze-thaw cycles.
Precautions	GPR89A Antibody - C-terminal region is for research use only and not for use in diagnostic or therapeutic procedures.

Protein Information

Name	GPR89A (HGNC:31984)
Synonyms	GPHRA, GPR89, SH120
Function	Voltage-gated channel that enables the transfer of monoatomic anions such as iodide, chloride, bromide and fluoride which may function in counter-ion conductance and participates in Golgi acidification (PubMed: 18794847). Plays a role in lymphocyte development, probably by acting as a RABL3 effector in hematopoietic cells (By similarity).
Cellular Location	Golgi apparatus membrane; Multi-pass membrane protein

Tissue Location

Ubiquitous..

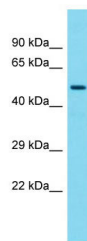
Background

Voltage dependent anion channel required for acidification and functions of the Golgi apparatus that may function in counter-ion conductance.

References

Lai C.-H.,et al.Genome Res. 10:703-713(2000).
Corominas R.,et al.Nat. Commun. 5:3650-3650(2014).
Clark H.F.,et al.Genome Res. 13:2265-2270(2003).
Matsuda A.,et al.Oncogene 22:3307-3318(2003).
Kalnine N.,et al.Submitted (MAY-2003) to the EMBL/GenBank/DDBJ databases.

Images



Host: Rabbit
Target Name: GPR89A
Sample Tissue: Fetal Heart lysates
Antibody Dilution: 1.0µg/ml

Please note: All products are 'FOR RESEARCH USE ONLY. NOT FOR USE IN DIAGNOSTIC OR THERAPEUTIC PROCEDURES'.