

# LMAN1L Antibody - middle region

Rabbit Polyclonal Antibody

Catalog # AI15875

## Product Information

---

<b>Application</b>	WB
<b>Primary Accession</b>	<a href="#">Q9HAT1</a>
<b>Other Accession</b>	<a href="#">NM_021819</a> , <a href="#">NP_068591</a>
<b>Reactivity</b>	Human, Rabbit
<b>Predicted</b>	Human, Rabbit
<b>Host</b>	Rabbit
<b>Clonality</b>	Polyclonal
<b>Calculated MW</b>	57129

## Additional Information

---

<b>Gene ID</b>	79748
<b>Alias Symbol</b>	ERGIC-53L, ERGL
<b>Other Names</b>	Protein ERGIC-53-like, ERGIC53-like protein, Lectin mannose-binding 1-like, LMAN1-like protein, LMAN1L, ERGL
<b>Format</b>	Liquid. Purified antibody supplied in 1x PBS buffer with 0.09% (w/v) sodium azide and 2% sucrose.
<b>Reconstitution &amp; Storage</b>	Add 50 ul of distilled water. Final anti-LMAN1L antibody concentration is 1 mg/ml in PBS buffer with 2% sucrose. For longer periods of storage, store at 20°C. Avoid repeat freeze-thaw cycles.
<b>Precautions</b>	LMAN1L Antibody - middle region is for research use only and not for use in diagnostic or therapeutic procedures.

## Protein Information

---

<b>Name</b>	LMAN1L
<b>Synonyms</b>	ERGL
<b>Cellular Location</b>	Endoplasmic reticulum-Golgi intermediate compartment membrane; Single-pass type I membrane protein
<b>Tissue Location</b>	Highly expressed in normal and neoplastic prostate. Also expressed in cardiac atrium, salivary gland, spleen and selective cells in the CNS.

## References

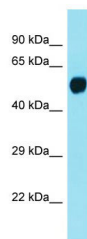
---

Yerushalmi N.,et al.Gene 265:55-60(2001).

Clark H.F.,et al.Genome Res. 13:2265-2270(2003).

## Images

---



Host: Rabbit

Target Name: LMAN1L

Sample Tissue: Fetal Brain lysates

Antibody Dilution: 1.0µg/ml

Please note: All products are 'FOR RESEARCH USE ONLY. NOT FOR USE IN DIAGNOSTIC OR THERAPEUTIC PROCEDURES'.