

LMAN1L Antibody - C-terminal region

Rabbit Polyclonal Antibody

Catalog # AI15876

Product Information

Application	WB
Primary Accession	Q9HAT1
Other Accession	NM_021819 , NP_068591
Reactivity	Human, Rabbit, Horse
Predicted	Human, Rabbit, Horse
Host	Rabbit
Clonality	Polyclonal
Calculated MW	57129

Additional Information

Gene ID	79748
Alias Symbol	ERGIC-53L, ERGL
Other Names	Protein ERGIC-53-like, ERGIC53-like protein, Lectin mannose-binding 1-like, LMAN1-like protein, LMAN1L, ERGL
Format	Liquid. Purified antibody supplied in 1x PBS buffer with 0.09% (w/v) sodium azide and 2% sucrose.
Reconstitution & Storage	Add 50 ul of distilled water. Final anti-LMAN1L antibody concentration is 1 mg/ml in PBS buffer with 2% sucrose. For longer periods of storage, store at 20°C. Avoid repeat freeze-thaw cycles.
Precautions	LMAN1L Antibody - C-terminal region is for research use only and not for use in diagnostic or therapeutic procedures.

Protein Information

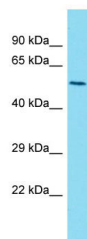
Name	LMAN1L
Synonyms	ERGL
Cellular Location	Endoplasmic reticulum-Golgi intermediate compartment membrane; Single-pass type I membrane protein
Tissue Location	Highly expressed in normal and neoplastic prostate. Also expressed in cardiac atrium, salivary gland, spleen and selective cells in the CNS.

References

Yerushalmi N.,et al.Gene 265:55-60(2001).

Clark H.F.,et al.Genome Res. 13:2265-2270(2003).

Images



Host: Rabbit

Target Name: LMAN1L

Sample Tissue: U937 Whole cell lysate

S

Antibody Dilution: 1.0µg/ml

Please note: All products are 'FOR RESEARCH USE ONLY. NOT FOR USE IN DIAGNOSTIC OR THERAPEUTIC PROCEDURES'.