

SP1 Antibody - middle region

Rabbit Polyclonal Antibody

Catalog # AI15884

Product Information

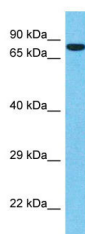
Application	WB
Primary Accession	E4Z9M7
Reactivity	Human, Mouse, Rat, Rabbit, Pig, Dog, Guinea Pig, Bovine, Neisseria Gonorrhoeae
Predicted	Human, Mouse, Rat, Rabbit, Pig, Dog, Guinea Pig, Bovine, Neisseria Gonorrhoeae
Host	Rabbit
Clonality	Polyclonal
Calculated MW	75 kDa

Additional Information

Format	Liquid. Purified antibody supplied in 1x PBS buffer with 0.09% (w/v) sodium azide and 2% sucrose.
Reconstitution & Storage	Add 50 ul of distilled water. Final anti-SP1 antibody concentration is 1 mg/ml in PBS buffer with 2% sucrose. For longer periods of storage, store at 20°C. Avoid repeat freeze-thaw cycles.
Precautions	SP1 Antibody - middle region is for research use only and not for use in diagnostic or therapeutic procedures.

Protein Information

Images



Host: Rabbit
Target Name: SP1
Sample Tissue: A549 Whole cell lysate
S
Antibody Dilution: 1.0µg/ml