

N4BP2L1 Antibody - N-terminal region

Rabbit Polyclonal Antibody

Catalog # AI15892

Product Information

Application	WB
Primary Accession	Q5TBK1
Other Accession	NM_052818 , NP_438169
Reactivity	Human, Mouse, Rat, Rabbit, Dog, Guinea Pig, Horse, Bovine
Predicted	Human, Mouse, Rat, Rabbit, Pig, Dog, Guinea Pig, Horse, Bovine
Host	Rabbit
Clonality	Polyclonal
Calculated MW	28981

Additional Information

Gene ID	90634
Alias Symbol	CG018
Other Names	NEDD4-binding protein 2-like 1, N4BP2L1, CG081
Format	Liquid. Purified antibody supplied in 1x PBS buffer with 0.09% (w/v) sodium azide and 2% sucrose.
Reconstitution & Storage	Add 50 ul of distilled water. Final anti-N4BP2L1 antibody concentration is 1 mg/ml in PBS buffer with 2% sucrose. For longer periods of storage, store at 20°C. Avoid repeat freeze-thaw cycles.
Precautions	N4BP2L1 Antibody - N-terminal region is for research use only and not for use in diagnostic or therapeutic procedures.

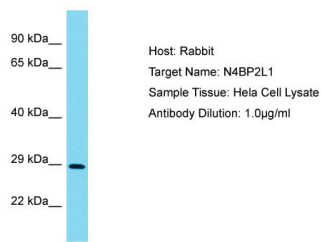
Protein Information

Name	N4BP2L1
Synonyms	CG081
Function	Might play a role in adipocyte differentiation and triglyceride accumulation.

References

Dunham A., et al. Nature 428:522-528(2004).
Mural R.J., et al. Submitted (JUL-2005) to the EMBL/GenBank/DDBJ databases.

Images



Host: Rabbit
Target Name: N4BP2L1
Sample Tissue: Hela Cell Lysate
Antibody Dilution: 1.0µg/ml

Host: Rabbit
Target Name: N4BP2L1
Sample Tissue: Hela Whole cell lysate
S
Antibody Dilution: 1.0µg/ml

Please note: All products are 'FOR RESEARCH USE ONLY. NOT FOR USE IN DIAGNOSTIC OR THERAPEUTIC PROCEDURES'.