

NBPF7 Antibody - middle region

Rabbit Polyclonal Antibody

Catalog # AI15894

Product Information

Application	WB
Primary Accession	P0C2Y1
Other Accession	NM_001047980 , NP_001041445
Reactivity	Human
Predicted	Human
Host	Rabbit
Clonality	Polyclonal
Calculated MW	48090

Additional Information

Other Names	Putative neuroblastoma breakpoint family member 7, NBPF7
Format	Liquid. Purified antibody supplied in 1x PBS buffer with 0.09% (w/v) sodium azide and 2% sucrose.
Reconstitution & Storage	Add 50 ul of distilled water. Final anti-NBPF7 antibody concentration is 1 mg/ml in PBS buffer with 2% sucrose. For longer periods of storage, store at 20°C. Avoid repeat freeze-thaw cycles.
Precautions	NBPF7 Antibody - middle region is for research use only and not for use in diagnostic or therapeutic procedures.

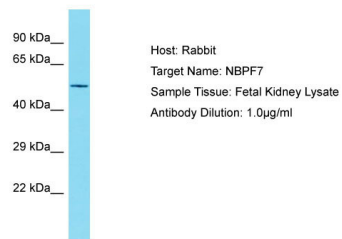
Protein Information

Name	NBPF7P (HGNC:31989)
Synonyms	NBPF7
Cellular Location	Cytoplasm.

References

Gregory S.G.,et al.Nature 441:315-321(2006).

Images



Host: Rabbit
Target Name: NBPF7
Sample Tissue: Fetal Kidney lysates
Antibody Dilution: 1.0µg/ml

Please note: All products are 'FOR RESEARCH USE ONLY. NOT FOR USE IN DIAGNOSTIC OR THERAPEUTIC PROCEDURES'.