

NBPF16 Antibody - N-terminal region

Rabbit Polyclonal Antibody

Catalog # AI15896

Product Information

Application	WB
Primary Accession	Q5SXJ2
Reactivity	Human
Predicted	Human
Host	Rabbit
Clonality	Polyclonal
Calculated MW	73 KDa

Additional Information

Other Names	Neuroblastoma breakpoint family member 16, NBPF16
Format	Liquid. Purified antibody supplied in 1x PBS buffer with 0.09% (w/v) sodium azide and 2% sucrose.
Reconstitution & Storage	Add 50 ul of distilled water. Final anti-NBPF16 antibody concentration is 1 mg/ml in PBS buffer with 2% sucrose. For longer periods of storage, store at 20°C. Avoid repeat freeze-thaw cycles.
Precautions	NBPF16 Antibody - N-terminal region is for research use only and not for use in diagnostic or therapeutic procedures.

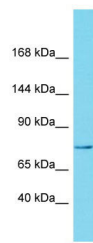
Protein Information

References

Gregory S.G.,et al.Nature 441:315-321(2006).

Images

Host: Rabbit
Target Name: NBPF16
Sample Tissue: Placenta lysates
Antibody Dilution: 1.0µg/ml



Please note: All products are 'FOR RESEARCH USE ONLY. NOT FOR USE IN DIAGNOSTIC OR THERAPEUTIC PROCEDURES'.