

PMPCA Antibody - C-terminal region

Rabbit Polyclonal Antibody

Catalog # AI15953

Product Information

| | |
|--------------------------|--|
| Application | WB |
| Primary Accession | Q10713 |
| Other Accession | NM_015160 , NP_055975 |
| Reactivity | Human, Mouse, Rat, Dog, Guinea Pig, Horse, Bovine |
| Predicted | Human, Mouse, Rat, Pig, Dog, Guinea Pig, Horse, Bovine |
| Host | Rabbit |
| Clonality | Polyclonal |
| Calculated MW | 58253 |

Additional Information

| | |
|-------------------------------------|---|
| Gene ID | 23203 |
| Alias Symbol | Alpha-MPP, INPP5E |
| Other Names | Mitochondrial-processing peptidase subunit alpha, 3.4.24.64, Alpha-MPP, P-55, PMPCA, INPP5E, KIAA0123, MPPA |
| Format | Liquid. Purified antibody supplied in 1x PBS buffer with 0.09% (w/v) sodium azide and 2% sucrose. |
| Reconstitution & Storage | Add 50 µl of distilled water. Final Anti-PMPCA antibody concentration is 1 mg/ml in PBS buffer with 2% sucrose. For longer periods of storage, store at -20°C. Avoid repeat freeze-thaw cycles. |
| Precautions | PMPCA Antibody - C-terminal region is for research use only and not for use in diagnostic or therapeutic procedures. |

Protein Information

| | |
|--------------------------|--|
| Name | PMPCA |
| Synonyms | INPP5E, KIAA0123, MPPA |
| Function | Substrate recognition and binding subunit of the essential mitochondrial processing protease (MPP), which cleaves the mitochondrial sequence off newly imported precursors proteins. |
| Cellular Location | Mitochondrion matrix {ECO:0000250 UniProtKB:P20069}. Mitochondrion inner membrane |
| Tissue Location | Ubiquitously expressed with highest expression in fetal tissues and adult |

Background

Cleaves presequences (transit peptides) from mitochondrial protein precursors.

References

Nagase T.,et al.DNA Res. 2:37-43(1995).

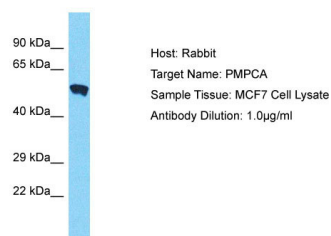
Nagase T.,et al.DNA Res. 2:167-174(1995).

Ota T.,et al.Nat. Genet. 36:40-45(2004).

Humphray S.J.,et al.Nature 429:369-374(2004).

Mural R.J.,et al.Submitted (JUL-2005) to the EMBL/GenBank/DDBJ databases.

Images



Host: Rabbit
Target Name: PMPCA
Sample Tissue: MCF7 Cell Lysate
Antibody Dilution: 1.0µg/ml

Host: Rabbit

Target Name: PMPCA

Sample Tissue: MCF7 Whole cell lysate

S

Antibody Dilution: 1.0µg/ml PMPCA is supported by BioGPS gene expression data to be expressed in MCF7

Please note: All products are 'FOR RESEARCH USE ONLY. NOT FOR USE IN DIAGNOSTIC OR THERAPEUTIC PROCEDURES'.