

POTEA Antibody - C-terminal region

Rabbit Polyclonal Antibody

Catalog # AI15954

Product Information

Application	WB
Primary Accession	Q6S8J7
Other Accession	NM_001005365 , NP_001005365
Reactivity	Human, Yeast
Predicted	Human, Yeast
Host	Rabbit
Clonality	Polyclonal
Calculated MW	56166

Additional Information

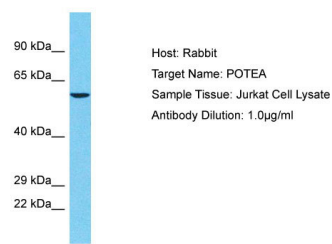
Gene ID	340441
Alias Symbol Other Names	A26A1, CT104.3, POTE-8, POTE8 POTE ankyrin domain family member A, ANKRD26-like family A member 1, Prostate, ovary, testis-expressed protein on chromosome 8, POTE-8, POTEA, A26A1, POTE8
Format	Liquid. Purified antibody supplied in 1x PBS buffer with 0.09% (w/v) sodium azide and 2% sucrose.
Reconstitution & Storage	Add 50 μ l of distilled water. Final Anti-POTEA antibody concentration is 1 mg/ml in PBS buffer with 2% sucrose. For longer periods of storage, store at -20°C. Avoid repeat freeze-thaw cycles.
Precautions	POTEA Antibody - C-terminal region is for research use only and not for use in diagnostic or therapeutic procedures.

Protein Information

Name	POTEA
Synonyms	A26A1, POTE8

References

Bera T.K., et al. Gene 337:45-53(2004).
Nusbaum C., et al. Nature 439:331-335(2006).



Host: Rabbit
Target Name: POTEAS
Sample Tissue: Jurkat Whole cell lysate
Antibody Dilution: 1.0µg/ml

Please note: All products are 'FOR RESEARCH USE ONLY. NOT FOR USE IN DIAGNOSTIC OR THERAPEUTIC PROCEDURES'.