

# PPIAL4G Antibody - C-terminal region

Rabbit Polyclonal Antibody

Catalog # AI15955

## Product Information

---

<b>Application</b>	WB
<b>Primary Accession</b>	<a href="#">A2BFH1</a>
<b>Other Accession</b>	<a href="#">NM_001123068</a> , <a href="#">NP_001116540</a>
<b>Reactivity</b>	Human, Mouse, Rat, Pig, Dog, Guinea Pig, Horse, Bovine, Sheep, Neisseria Gonorrhoeae
<b>Predicted</b>	Human, Mouse, Rat, Pig, Dog, Guinea Pig, Horse, Bovine, Sheep, Neisseria Gonorrhoeae
<b>Host</b>	Rabbit
<b>Clonality</b>	Polyclonal
<b>Calculated MW</b>	18 KDa

## Additional Information

---

<b>Alias Symbol</b>	BX284650.5
<b>Other Names</b>	Peptidyl-prolyl cis-trans isomerase A-like 4G, PPIase A-like 4G, 5.2.1.8, Peptidylprolyl cis-trans isomerase A-like 4, PPIAL4G
<b>Format</b>	Liquid. Purified antibody supplied in 1x PBS buffer with 0.09% (w/v) sodium azide and 2% sucrose.
<b>Reconstitution &amp; Storage</b>	Add 50 µl of distilled water. Final Anti-PPIAL4G antibody concentration is 1 mg/ml in PBS buffer with 2% sucrose. For longer periods of storage, store at -20°C. Avoid repeat freeze-thaw cycles.
<b>Precautions</b>	PPIAL4G Antibody - C-terminal region is for research use only and not for use in diagnostic or therapeutic procedures.

## Protein Information

---

## Background

---

PPIases accelerate the folding of proteins. It catalyzes the cis-trans isomerization of proline imidic peptide bonds in oligopeptides (By similarity).

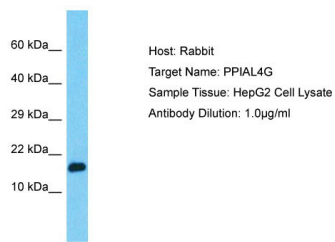
## References

---

Gregory S.G., et al. Nature 441:315-321(2006).

# Images

---



Host: Rabbit  
Target Name: PPIAL4G  
Sample Tissue: HepG2 Cell Lysate  
Antibody Dilution: 1.0µg/ml

Host: Rabbit  
Target Name: PPIAL4G  
Sample Tissue: HepG2 Whole cell lysate  
S  
Antibody Dilution: 1.0µg/ml

Please note: All products are 'FOR RESEARCH USE ONLY. NOT FOR USE IN DIAGNOSTIC OR THERAPEUTIC PROCEDURES'.