

# PPTC7 Antibody - C-terminal region

Rabbit Polyclonal Antibody

Catalog # AI15956

## Product Information

<b>Application</b>	WB
<b>Primary Accession</b>	<a href="#">Q8NI37</a>
<b>Other Accession</b>	<a href="#">NM_139283</a> , <a href="#">NP_644812</a>
<b>Reactivity</b>	Human, Mouse, Rat, Rabbit, Pig, Dog, Guinea Pig, Horse, Bovine
<b>Predicted</b>	Human, Mouse, Rat, Rabbit, Pig, Dog, Guinea Pig, Horse, Bovine
<b>Host</b>	Rabbit
<b>Clonality</b>	Polyclonal
<b>Calculated MW</b>	32646

## Additional Information

<b>Gene ID</b>	160760
<b>Alias Symbol</b>	TA-PP2C, TAPP2C
<b>Other Names</b>	Protein phosphatase PTC7 homolog, 3.1.3.16, T-cell activation protein phosphatase 2C, TA-PP2C, T-cell activation protein phosphatase 2C-like, PPTC7, TAPP2C
<b>Format</b>	Liquid. Purified antibody supplied in 1x PBS buffer with 0.09% (w/v) sodium azide and 2% sucrose.
<b>Reconstitution &amp; Storage</b>	Add 50 $\mu$ l of distilled water. Final Anti-PPTC7 antibody concentration is 1 mg/ml in PBS buffer with 2% sucrose. For longer periods of storage, store at -20°C. Avoid repeat freeze-thaw cycles.
<b>Precautions</b>	PPTC7 Antibody - C-terminal region is for research use only and not for use in diagnostic or therapeutic procedures.

## Protein Information

<b>Name</b>	PPTC7
<b>Synonyms</b>	TAPP2C
<b>Function</b>	Protein phosphatase that plays an essential role in mitochondrial metabolism and biogenesis (PubMed: <a href="#">30267671</a> ). Positively regulates biosynthesis of the ubiquinone, coenzyme Q (PubMed: <a href="#">30267671</a> ). Dephosphorylates the ubiquinone biosynthesis protein COQ7 which is likely to lead to its activation (PubMed: <a href="#">30267671</a> ). Serves as a crucial sensor for mitophagy, though the underlying mechanism remains ambiguous (By similarity). May dephosphorylate BNIP3 and NIX and thereby directly

regulates mitophagy receptor function and stability (By similarity). Alternatively, promotes SCF-FBXL4-dependent ubiquitination and degradation of BNIP3 and NIX independently of its catalytic activity to restrain mitophagy (PubMed:[38992176](#)).

<b>Cellular Location</b>	Mitochondrion matrix
<b>Tissue Location</b>	Expressed in keratinocytes (at protein level).

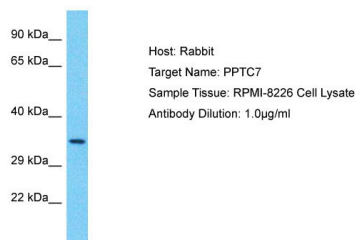
## References

---

Mao M.,et al.Genomics 83:989-999(2004).  
Zhou G.,et al.Submitted (AUG-2003) to the EMBL/GenBank/DDBJ databases.  
Ota T.,et al.Nat. Genet. 36:40-45(2004).  
Mural R.J.,et al.Submitted (JUL-2005) to the EMBL/GenBank/DDBJ databases.  
Bechtel S.,et al.BMC Genomics 8:399-399(2007).

## Images

---



Host: Rabbit  
Target Name: PPTC7  
Sample Tissue: RPMI-8226 Whole cell lysate  
S  
Antibody Dilution: 1.0µg/ml

Please note: All products are 'FOR RESEARCH USE ONLY. NOT FOR USE IN DIAGNOSTIC OR THERAPEUTIC PROCEDURES'.