

# PRAMEF7 Antibody - N-terminal region

Rabbit Polyclonal Antibody

Catalog # AI15957

## Product Information

---

<b>Application</b>	WB
<b>Primary Accession</b>	<a href="#">Q5VXH5</a>
<b>Other Accession</b>	<a href="#">NM_001012277</a> , <a href="#">NP_001012277</a>
<b>Reactivity</b>	Human
<b>Predicted</b>	Human
<b>Host</b>	Rabbit
<b>Clonality</b>	Polyclonal
<b>Calculated MW</b>	53627

## Additional Information

---

<b>Gene ID</b>	441871
<b>Other Names</b>	PRAME family member 7, PRAMEF7
<b>Format</b>	Liquid. Purified antibody supplied in 1x PBS buffer with 0.09% (w/v) sodium azide and 2% sucrose.
<b>Reconstitution &amp; Storage</b>	Add 50 µl of distilled water. Final Anti-PRAMEF7 antibody concentration is 1 mg/ml in PBS buffer with 2% sucrose. For longer periods of storage, store at -20°C. Avoid repeat freeze-thaw cycles.
<b>Precautions</b>	PRAMEF7 Antibody - N-terminal region is for research use only and not for use in diagnostic or therapeutic procedures.

## Protein Information

---

<b>Name</b>	PRAMEF7 ( <a href="#">HGNC:28415</a> )
-------------	--

## References

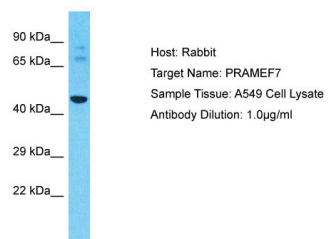
---

Gregory S.G., et al. Nature 441:315-321(2006).

## Images

---

Host: Rabbit



Target Name: PRAMEF7  
Sample Tissue: A549 Whole cell lysate  
S  
Antibody Dilution: 1.0µg/ml

Please note: All products are 'FOR RESEARCH USE ONLY. NOT FOR USE IN DIAGNOSTIC OR THERAPEUTIC PROCEDURES'.