

PRAMEF15 Antibody - C-terminal region

Rabbit Polyclonal Antibody

Catalog # AI15958

Product Information

Application	WB
Primary Accession	Q5VWM5
Other Accession	NP_001091846
Reactivity	Human
Predicted	Human
Host	Rabbit
Clonality	Polyclonal
Calculated MW	55 KDa

Additional Information

Other Names	PRAME family member 9/15, PRAMEF9
Format	Liquid. Purified antibody supplied in 1x PBS buffer with 0.09% (w/v) sodium azide and 2% sucrose.
Reconstitution & Storage	Add 50 μ l of distilled water. Final Anti-PRAMEF15 antibody concentration is 1 mg/ml in PBS buffer with 2% sucrose. For longer periods of storage, store at -20°C. Avoid repeat freeze-thaw cycles.
Precautions	PRAMEF15 Antibody - C-terminal region is for research use only and not for use in diagnostic or therapeutic procedures.

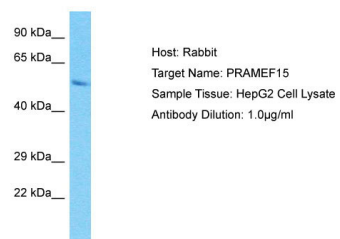
Protein Information

References

Gregory S.G., et al. Nature 441:315-321(2006).

Images

Host: Rabbit
Target Name: PRAMEF15
Sample Tissue: HepG2 Whole cell lysate
s
Antibody Dilution: 1.0 μ g/ml



Please note: All products are 'FOR RESEARCH USE ONLY. NOT FOR USE IN DIAGNOSTIC OR THERAPEUTIC PROCEDURES'.