

# RBM43 Antibody - N-terminal region

Rabbit Polyclonal Antibody

Catalog # AI15964

## Product Information

---

<b>Application</b>	WB
<b>Primary Accession</b>	<a href="#">Q6ZSC3</a>
<b>Other Accession</b>	<a href="#">NM_198557</a> , <a href="#">NP_940959</a>
<b>Reactivity</b>	Human, Mouse, Rat, Horse, Bovine
<b>Predicted</b>	Human, Mouse, Rat, Horse, Bovine
<b>Host</b>	Rabbit
<b>Clonality</b>	Polyclonal
<b>Calculated MW</b>	40666

## Additional Information

---

<b>Gene ID</b>	375287
<b>Alias Symbol</b>	C2orf38
<b>Other Names</b>	RNA-binding protein 43, RNA-binding motif protein 43, RBM43, C2orf38
<b>Format</b>	Liquid. Purified antibody supplied in 1x PBS buffer with 0.09% (w/v) sodium azide and 2% sucrose.
<b>Reconstitution &amp; Storage</b>	Add 50 $\mu$ l of distilled water. Final Anti-RBM43 antibody concentration is 1 mg/ml in PBS buffer with 2% sucrose. For longer periods of storage, store at -20°C. Avoid repeat freeze-thaw cycles.
<b>Precautions</b>	RBM43 Antibody - N-terminal region is for research use only and not for use in diagnostic or therapeutic procedures.

## Protein Information

---

<b>Name</b>	RBM43
<b>Synonyms</b>	C2orf38

## References

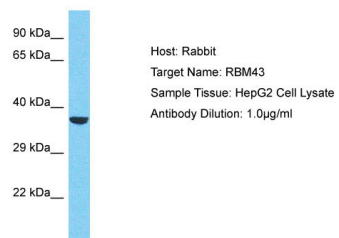
---

Ota T., et al. Nat. Genet. 36:40-45(2004).

Mural R.J., et al. Submitted (SEP-2005) to the EMBL/GenBank/DDBJ databases.

## Images

---



Host: Rabbit  
Target Name: RBM43  
Sample Tissue: HepG2 Whole cell lysate  
S  
Antibody Dilution: 1.0µg/ml

Please note: All products are 'FOR RESEARCH USE ONLY. NOT FOR USE IN DIAGNOSTIC OR THERAPEUTIC PROCEDURES'.