

# RUFY4 Antibody - C-terminal region

Rabbit Polyclonal Antibody

Catalog # AI15968

## Product Information

Application	WB
Primary Accession	<a href="#">Q6ZNE9</a>
Other Accession	<a href="#">NM_198483</a> , <a href="#">NP_940885</a>
Reactivity	Human, Mouse, Rat, Rabbit, Dog, Guinea Pig, Horse, Bovine
Predicted	Human, Mouse, Rat, Rabbit, Pig, Dog, Guinea Pig, Horse, Bovine
Host	Rabbit
Clonality	Polyclonal
Calculated MW	64350

## Additional Information

Gene ID	285180
Other Names	RUN and FYVE domain-containing protein 4, RUFY4
Format	Liquid. Purified antibody supplied in 1x PBS buffer with 0.09% (w/v) sodium azide and 2% sucrose.
Reconstitution & Storage	Add 50 $\mu$ l of distilled water. Final Anti-RUFY4 antibody concentration is 1 mg/ml in PBS buffer with 2% sucrose. For longer periods of storage, store at -20°C. Avoid repeat freeze-thaw cycles.
Precautions	RUFY4 Antibody - C-terminal region is for research use only and not for use in diagnostic or therapeutic procedures.

## Protein Information

Name	RUFY4
Function	ARL8 effector that promotes the coupling of endolysosomes to dynein-dynactin for retrograde transport along microtubules. Acts by binding both GTP-bound ARL8 and dynein-dynactin. In nonneuronal cells, promotes concentration of endolysosomes in the juxtanuclear area. In hippocampal neurons, drives retrograde transport of endolysosomes from the axon to the soma (PubMed: <a href="#">35314674</a> ). Positive regulator of macroautophagy in dendritic cells. Increases autophagic flux, probably by stimulating both autophagosome formation and facilitating tethering with lysosomes. Binds to phosphatidylinositol 3-phosphate (PtdIns3P) through its FYVE-type zinc finger (PubMed: <a href="#">26416964</a> ). Positive regulator of osteoclast bone-resorbing activity, possibly by promoting late endosome-lysosome fusion by acting as an adapter protein between RAB7A on late endosomes and LAMP2 on primary

lysosomes (By similarity).

## Cellular Location

Cytoplasmic vesicle, autophagosome. Lysosome Note=In the presence of ARL8, recruited to endolysosomes

## References

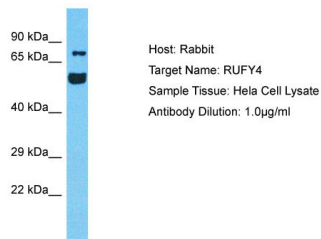
---

Ota T.,et al.Nat. Genet. 36:40-45(2004).

Hillier L.W.,et al.Nature 434:724-731(2005).

## Images

---



Host: Rabbit  
Target Name: RUFY4  
Sample Tissue: HeLa Whole cell lysate  
S  
Antibody Dilution: 1.0µg/ml

Please note: All products are 'FOR RESEARCH USE ONLY. NOT FOR USE IN DIAGNOSTIC OR THERAPEUTIC PROCEDURES'.