

SLC38A8 Antibody - C-terminal region

Rabbit Polyclonal Antibody

Catalog # AI15970

Product Information

Application	WB
Primary Accession	A6NNN8
Other Accession	NM_001080442 , NP_001073911
Reactivity	Human, Mouse, Rat, Rabbit, Dog, Guinea Pig, Horse, Bovine
Predicted	Human, Mouse, Rat, Rabbit, Pig, Dog, Guinea Pig, Horse, Bovine
Host	Rabbit
Clonality	Polyclonal
Calculated MW	46731

Additional Information

Gene ID	146167
Other Names	Putative sodium-coupled neutral amino acid transporter 8, Solute carrier family 38 member 8, SLC38A8
Format	Liquid. Purified antibody supplied in 1x PBS buffer with 0.09% (w/v) sodium azide and 2% sucrose.
Reconstitution & Storage	Add 50 µl of distilled water. Final Anti-SLC38A8 antibody concentration is 1 mg/ml in PBS buffer with 2% sucrose. For longer periods of storage, store at -20°C. Avoid repeat freeze-thaw cycles.
Precautions	SLC38A8 Antibody - C-terminal region is for research use only and not for use in diagnostic or therapeutic procedures.

Protein Information

Name	SLC38A8 {ECO:0000250 UniProtKB:Q5HZH7, ECO:0000312 HGNC:HGNC:32434}
Function	Electrogenic sodium-dependent amino acid transporter with a preference for L-glutamine, L-alanine, L-histidine, L-aspartate and L- arginine. May facilitate glutamine uptake in both excitatory and inhibitory neurons. The transport mechanism and stoichiometry remain to be elucidated.
Cellular Location	Membrane {ECO:0000250 UniProtKB:Q5HZH7}; Multi- pass membrane protein. Cytoplasm, cell cortex {ECO:0000250 UniProtKB:Q5HZH7}. Cell projection, axon {ECO:0000250 UniProtKB:Q5HZH7}
Tissue Location	Expressed in fetal and adult brain, and spinal cord. In the brain, it is localized

in the cell body and axon of the majority of neuronal cells and in a subset of glial cells. Found throughout the neuronal retina, with higher expression levels in the inner and outer plexiform layers and the photoreceptor layer. Very weak expression is also present in the kidneys, thymus, and testes

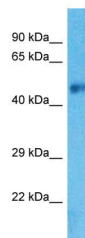
Background

Putative sodium-dependent amino acid/proton antiporter.

References

Martin J.,et al.Nature 432:988-994(2004).
Poulter J.A.,et al.Am. J. Hum. Genet. 93:1143-1150(2013).
Perez Y.,et al.Eur. J. Hum. Genet. 22:703-706(2014).

Images



Host: Rabbit
Target Name: SLC38A8
Sample Tissue: Fetal Brain lysates
Antibody Dilution: 1.0µg/ml

Please note: All products are 'FOR RESEARCH USE ONLY. NOT FOR USE IN DIAGNOSTIC OR THERAPEUTIC PROCEDURES'.