

TIMM10 Antibody - middle region

Rabbit Polyclonal Antibody

Catalog # AI15981

Product Information

Application	WB
Primary Accession	P62072
Other Accession	NM_012456 , NP_036588
Reactivity	Human, Mouse, Rat, Rabbit, Dog, Guinea Pig, Horse, Bovine
Predicted	Human, Mouse, Rat, Rabbit, Pig, Dog, Guinea Pig, Horse, Bovine
Host	Rabbit
Clonality	Polyclonal
Calculated MW	10333

Additional Information

Gene ID	26519
Alias Symbol	TIM10, TIM10A
Other Names	Mitochondrial import inner membrane translocase subunit Tim10, TIMM10, TIM10
Format	Liquid. Purified antibody supplied in 1x PBS buffer with 0.09% (w/v) sodium azide and 2% sucrose.
Reconstitution & Storage	Add 50 μ l of distilled water. Final Anti-TIMM10 antibody concentration is 1 mg/ml in PBS buffer with 2% sucrose. For longer periods of storage, store at -20°C. Avoid repeat freeze-thaw cycles.
Precautions	TIMM10 Antibody - middle region is for research use only and not for use in diagnostic or therapeutic procedures.

Protein Information

Name	TIMM10
Synonyms	TIM10
Function	Mitochondrial intermembrane chaperone that participates in the import and insertion of multi-pass transmembrane proteins into the mitochondrial inner membrane. May also be required for the transfer of beta-barrel precursors from the TOM complex to the sorting and assembly machinery (SAM complex) of the outer membrane. Acts as a chaperone-like protein that protects the hydrophobic precursors from aggregation and guide them through the mitochondrial intermembrane space.

Cellular Location	Mitochondrion inner membrane; Peripheral membrane protein; Intermembrane side
Tissue Location	Ubiquitous, with highest expression in heart, kidney, liver and skeletal muscle.

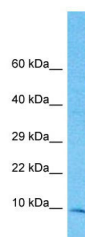
Background

Mitochondrial intermembrane chaperone that participates in the import and insertion of multi-pass transmembrane proteins into the mitochondrial inner membrane. May also be required for the transfer of beta-barrel precursors from the TOM complex to the sorting and assembly machinery (SAM complex) of the outer membrane. Acts as a chaperone-like protein that protects the hydrophobic precursors from aggregation and guide them through the mitochondrial intermembrane space.

References

Bauer M.F.,et al.FEBS Lett. 464:41-47(1999).
Jin H.,et al.Genomics 61:259-267(1999).
Ota T.,et al.Nat. Genet. 36:40-45(2004).
Mural R.J.,et al.Submitted (JUL-2005) to the EMBL/GenBank/DDBJ databases.
Rothbauer U.,et al.J. Biol. Chem. 276:37327-37334(2001).

Images



Host: Rabbit
Target Name: TIMM10
Sample Tissue: 721_B Whole cell lysate
S
Antibody Dilution: 1.0µg/ml
TIMM10 is supported by
BioGPS gene expression data to be expressed in 721_B

Please note: All products are 'FOR RESEARCH USE ONLY. NOT FOR USE IN DIAGNOSTIC OR THERAPEUTIC PROCEDURES'.