

TMEM68 Antibody - N-terminal region

Rabbit Polyclonal Antibody

Catalog # AI15983

Product Information

Application	WB
Primary Accession	Q96MH6
Reactivity	Human, Mouse, Rat, Rabbit, Pig, Dog, Guinea Pig, Horse
Predicted	Human, Mouse, Rat, Rabbit, Pig, Dog, Guinea Pig, Horse
Host	Rabbit
Clonality	Polyclonal
Calculated MW	37425

Additional Information

Gene ID	137695
Other Names	Transmembrane protein 68, TMEM68
Format	Liquid. Purified antibody supplied in 1x PBS buffer with 0.09% (w/v) sodium azide and 2% sucrose.
Reconstitution & Storage	Add 50 μ l of distilled water. Final Anti-TMEM68 antibody concentration is 1 mg/ml in PBS buffer with 2% sucrose. For longer periods of storage, store at -20°C. Avoid repeat freeze-thaw cycles.
Precautions	TMEM68 Antibody - N-terminal region is for research use only and not for use in diagnostic or therapeutic procedures.

Protein Information

Name	TMEM68 {ECO:0000303 PubMed:37648867, ECO:0000312 HGNC:HGNC:26510}
Function	Catalytic subunit of the alternative triglyceride biosynthesis pathway, which mediates formation of triacylglycerol from diacylglycerol and membrane phospholipids (PubMed: 37648867). Synthesizes triacylglycerol at the expense of membrane phospholipids, such as phosphatidylcholine (PC) and its ether-linked form (ePC), thereby altering the composition of membranes (PubMed: 37648867). The alternative triglyceride biosynthesis pathway is probably required to provide the energy required for rapid growth when fuel sources are limiting (PubMed: 37648867). It maintains mitochondrial function during periods of extracellular lipid starvation (PubMed: 37648867). Can also use acyl-CoA as donor: acts as a acyl-CoA:monoacylglycerol acyltransferase (MGAT), but also shows acyl-CoA:diacylglycerol acyltransferase (DGAT) activity (By similarity).

Cellular Location

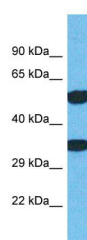
Endoplasmic reticulum membrane; Multi-pass membrane protein

References

Ota T.,et al.Nat. Genet. 36:40-45(2004).

Bechtel S.,et al.BMC Genomics 8:399-399(2007).

Images



Host: Rabbit

Target Name: TMEM68

Sample Tissue: Jurkat Whole cell lysate

S

Antibody Dilution: 1.0µg/ml

Please note: All products are 'FOR RESEARCH USE ONLY. NOT FOR USE IN DIAGNOSTIC OR THERAPEUTIC PROCEDURES'.