

ZDHHC22 Antibody - C-terminal region

Rabbit Polyclonal Antibody

Catalog # AI16002

Product Information

Application	WB
Primary Accession	Q8N966
Other Accession	NM_174976 , NP_777636
Reactivity	Human, Mouse, Rat, Rabbit, Pig, Dog, Guinea Pig, Horse, Bovine
Predicted	Human, Mouse, Rat, Rabbit, Pig, Dog, Guinea Pig, Horse, Bovine
Host	Rabbit
Clonality	Polyclonal
Calculated MW	29100

Additional Information

Gene ID	283576
Alias Symbol	C14orf59
Other Names	Palmitoyltransferase ZDHHC22, 2.3.1.225, Zinc finger DHHC domain-containing protein 22, DHHC-22, zDHHC22, ZDHHC22, C14orf59
Format	Liquid. Purified antibody supplied in 1x PBS buffer with 0.09% (w/v) sodium azide and 2% sucrose.
Reconstitution & Storage	Add 50 μ l of distilled water. Final Anti-ZDHHC22 antibody concentration is 1 mg/ml in PBS buffer with 2% sucrose. For longer periods of storage, store at -20°C. Avoid repeat freeze-thaw cycles.
Precautions	ZDHHC22 Antibody - C-terminal region is for research use only and not for use in diagnostic or therapeutic procedures.

Protein Information

Name	ZDHHC22 (HGNC:20106)
Synonyms	C14orf59
Function	Palmitoyltransferase that could catalyze the addition of palmitate onto various protein substrates and be involved in a variety of cellular processes (PubMed: 22399288). Catalyzes the palmitoylation of KCNMA1, regulating localization of KCNMA1 to the plasma membrane (PubMed: 22399288). Might also mediate palmitoylation of CNN3 (By similarity).
Cellular Location	Endoplasmic reticulum membrane; Multi-pass membrane protein. Golgi apparatus membrane; Multi-pass membrane protein

Tissue Location

Widely expressed..

Background

Palmitoyltransferase that mediates palmitoylation of KCNMA1, regulating localization of KCNMA1 to the plasma membrane.

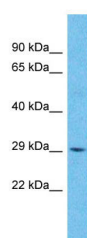
References

Ota T.,et al.Nat. Genet. 36:40-45(2004).

Heilig R.,et al.Nature 421:601-607(2003).

Tian L.,et al.J. Biol. Chem. 287:14718-14725(2012).

Images



Host: Rabbit

Target Name: ZDHHC22

Sample Tissue: 293T Whole cell lysate

S

Antibody Dilution: 1.0µg/ml

Please note: All products are 'FOR RESEARCH USE ONLY. NOT FOR USE IN DIAGNOSTIC OR THERAPEUTIC PROCEDURES'.