

SHISA7 Antibody - middle region

Rabbit Polyclonal Antibody

Catalog # AI16005

Product Information

| | |
|-------------------|---|
| Application | WB |
| Primary Accession | A6NL88 |
| Other Accession | NM_001145176 , NP_001138648 |
| Reactivity | Human, Mouse, Rat, Dog, Guinea Pig, Horse, Bovine |
| Predicted | Human, Mouse, Rat, Pig, Dog, Guinea Pig, Horse, Bovine |
| Host | Rabbit |
| Clonality | Polyclonal |
| Calculated MW | 56214 |

Additional Information

| | |
|--------------------------|---|
| Gene ID | 729956 |
| Other Names | Protein shisa-7, Protein shisa-6-like, SHISA7 |
| Format | Liquid. Purified antibody supplied in 1x PBS buffer with 0.09% (w/v) sodium azide and 2% sucrose. |
| Reconstitution & Storage | Add 50 μ l of distilled water. Final Anti-SHISA7 antibody concentration is 1 mg/ml in PBS buffer with 2% sucrose. For longer periods of storage, store at -20°C. Avoid repeat freeze-thaw cycles. |
| Precautions | SHISA7 Antibody - middle region is for research use only and not for use in diagnostic or therapeutic procedures. |

Protein Information

| | |
|-------------------|--|
| Name | SHISA7 (HGNC:35409) |
| Function | Transmembrane protein that regulates gamma-aminobutyric acid type A receptor (GABA(A)R) trafficking, channel deactivation kinetics and pharmacology, necessary for fast inhibitory transmission in the brain. Enhances the action of benzodiazepine, a primary GABA(A)Rs target drug, in the brain. May affect channel kinetics of AMPA-type glutamate receptors (AMPA), the brain's main excitatory neurotransmitter, necessary for synaptic hippocampal plasticity, and memory recall. May regulate the induction and maintenance of long-term potentiation at Schaffer collaterals/CA3-CA1 excitatory synapses. |
| Cellular Location | Postsynaptic density membrane {ECO:0000250 UniProtKB:Q8C3Q5}; Single-pass type I membrane protein {ECO:0000250 UniProtKB:Q8C3Q5}. |

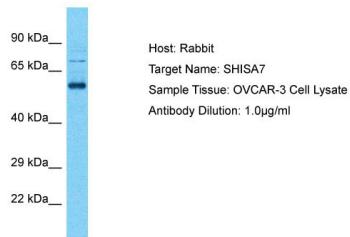
Note=Localizes at GABAergic inhibitory synapses and colocalizes with gephyrin in hippocampal neurons {ECO:0000250|UniProtKB:Q8C3Q5}

References

Grimwood J.,et al.Nature 428:529-535(2004).

Stevens M.,et al.Submitted (MAR-2006) to the EMBL/GenBank/DDBJ databases.

Images



Host: Rabbit
Target Name: SHISA7
Sample Tissue: OVCAR-3 Whole cell lysate
S
Antibody Dilution: 1.0µg/ml

Please note: All products are 'FOR RESEARCH USE ONLY. NOT FOR USE IN DIAGNOSTIC OR THERAPEUTIC PROCEDURES'.