

C6orf58 Antibody - N-terminal region

Rabbit Polyclonal Antibody

Catalog # AI16007

Product Information

Application	WB
Primary Accession	Q6P5S2
Other Accession	NP_001010905
Reactivity	Human, Rabbit, Pig, Dog, Guinea Pig, Horse, Bovine
Predicted	Human, Rabbit, Pig, Dog, Guinea Pig, Horse, Bovine
Host	Rabbit
Clonality	Polyclonal
Calculated MW	37926

Additional Information

Gene ID	352999
Other Names	UPF0762 protein C6orf58, C6orf58
Format	Liquid. Purified antibody supplied in 1x PBS buffer with 0.09% (w/v) sodium azide and 2% sucrose.
Reconstitution & Storage	Add 50 μ l of distilled water. Final Anti-C6orf58 antibody concentration is 1 mg/ml in PBS buffer with 2% sucrose. For longer periods of storage, store at -20°C. Avoid repeat freeze-thaw cycles.
Precautions	C6orf58 Antibody - N-terminal region is for research use only and not for use in diagnostic or therapeutic procedures.

Protein Information

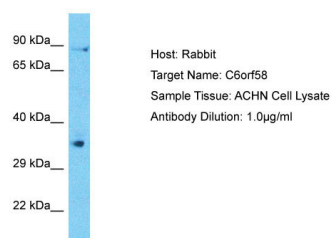
Name	LEG1 {ECO:0000250 UniProtKB:A5PF61, ECO:0000250 UniProtKB:Q4QRF7}
Function	May be involved in early liver development.
Cellular Location	Secreted {ECO:0000250 UniProtKB:A5PF61, ECO:0000250 UniProtKB:Q4QRF7}
Tissue Location	Detected in saliva and in hypomineralized dental enamel (at protein level).

References

Ota T., et al. Nat. Genet. 36:40-45(2004).

Mungall A.J.,et al.Nature 425:805-811(2003).
Mural R.J.,et al.Submitted (SEP-2005) to the EMBL/GenBank/DDBJ databases.
Ramachandran P.,et al.J. Proteome Res. 5:1493-1503(2006).

Images



Host: Rabbit
Target Name: C6orf58
Sample Tissue: ACHN Cell Lysate
Antibody Dilution: 1.0µg/ml

Host: Rabbit
Target Name: C6orf58
Sample Tissue: ACHN Whole cell lysate
S
Antibody Dilution: 1.0µg/ml

Please note: All products are 'FOR RESEARCH USE ONLY. NOT FOR USE IN DIAGNOSTIC OR THERAPEUTIC PROCEDURES'.