

CCDC180 Antibody - middle region

Rabbit Polyclonal Antibody

Catalog # AI16009

Product Information

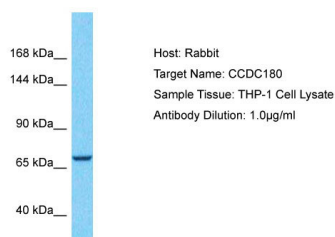
Application	WB
Primary Accession	Q9P1Z9-4
Other Accession	NM_020893 , NP_065944
Reactivity	Human, Rat, Pig, Yeast
Predicted	Human, Rat, Pig, Yeast
Host	Rabbit
Clonality	Polyclonal
Calculated MW	75 kDa

Additional Information

Format	Liquid. Purified antibody supplied in 1x PBS buffer with 0.09% (w/v) sodium azide and 2% sucrose.
Reconstitution & Storage	Add 50 μ l of distilled water. Final Anti-CCDC180 antibody concentration is 1 mg/ml in PBS buffer with 2% sucrose. For longer periods of storage, store at -20°C. Avoid repeat freeze-thaw cycles.
Precautions	CCDC180 Antibody - middle region is for research use only and not for use in diagnostic or therapeutic procedures.

Protein Information

Images



Host: Rabbit
Target Name: CCDC180
Sample Tissue: THP-1 Whole cell lysate
S
Antibody Dilution: 1.0 μ g/ml

Please note: All products are 'FOR RESEARCH USE ONLY. NOT FOR USE IN DIAGNOSTIC OR THERAPEUTIC PROCEDURES'.