

CCDC85C Antibody - C-terminal region

Rabbit Polyclonal Antibody

Catalog # AI16011

Product Information

Application	WB
Primary Accession	A6NKD9
Other Accession	NM_001144995 , NP_001138467
Reactivity	Human, Mouse, Dog, Guinea Pig, Horse, Bovine
Predicted	Human, Mouse, Pig, Dog, Guinea Pig, Horse, Bovine
Host	Rabbit
Clonality	Polyclonal
Calculated MW	45210

Additional Information

Gene ID	317762
Other Names	Coiled-coil domain-containing protein 85C, CCDC85C
Format	Liquid. Purified antibody supplied in 1x PBS buffer with 0.09% (w/v) sodium azide and 2% sucrose.
Reconstitution & Storage	Add 50 μ l of distilled water. Final Anti-CCDC85C antibody concentration is 1 mg/ml in PBS buffer with 2% sucrose. For longer periods of storage, store at -20°C. Avoid repeat freeze-thaw cycles.
Precautions	CCDC85C Antibody - C-terminal region is for research use only and not for use in diagnostic or therapeutic procedures.

Protein Information

Name	CCDC85C
Function	May play a role in cell-cell adhesion and epithelium development through its interaction with proteins of the beta-catenin family (Probable). May play an important role in cortical development, especially in the maintenance of radial glia (By similarity).
Cellular Location	Cell junction, tight junction {ECO:0000250 UniProtKB:E9Q6B2}. Cell junction, adherens junction. Note=Localizes to the apical junction of radial glia in the wall of lateral ventricles of the developing brain Colocalizes with TJP1 on the meshwork-like structure of adherens junctions on the lateral ventricles wall {ECO:0000250 UniProtKB:E9Q6B2}

Background

May play an important role in cortical development, especially in the maintenance of radial glia.

References

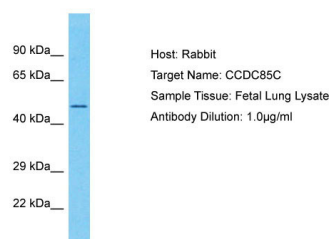
Heilig R.,et al.Nature 421:601-607(2003).

Gauci S.,et al.Anal. Chem. 81:4493-4501(2009).

Rigbolt K.T.,et al.Sci. Signal. 4:RS3-RS3(2011).

Van Damme P.,et al.Proc. Natl. Acad. Sci. U.S.A. 109:12449-12454(2012).

Images



Host: Rabbit
Target Name: CCDC85C
Sample Tissue: Fetal Lung lysates
Antibody Dilution: 1.0µg/ml

Please note: All products are 'FOR RESEARCH USE ONLY. NOT FOR USE IN DIAGNOSTIC OR THERAPEUTIC PROCEDURES'.