

FAM189A1 Antibody - middle region

Rabbit Polyclonal Antibody

Catalog # AI16015

Product Information

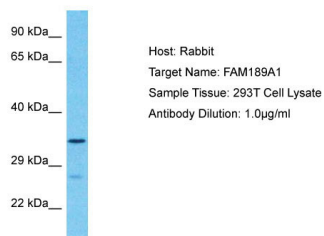
Application	WB
Primary Accession	O60320-2
Reactivity	Human
Host	Rabbit
Clonality	Polyclonal
Calculated MW	37 kDa

Additional Information

Alias Symbol	FAM189A1, KIAA0574, TMEM228,
Format	Liquid. Purified antibody supplied in 1x PBS buffer with 0.09% (w/v) sodium azide and 2% sucrose.
Reconstitution & Storage	Add 50 μ l of distilled water. Final Anti-FAM189A1 antibody concentration is 1 mg/ml in PBS buffer with 2% sucrose. For longer periods of storage, store at -20°C. Avoid repeat freeze-thaw cycles.
Precautions	FAM189A1 Antibody - middle region is for research use only and not for use in diagnostic or therapeutic procedures.

Protein Information

Images



Host: Rabbit
Target Name: FAM189A1
Sample Tissue: 293T Whole cell lysate
S
Antibody Dilution: 1.0 μ g/ml

Please note: All products are 'FOR RESEARCH USE ONLY. NOT FOR USE IN DIAGNOSTIC OR THERAPEUTIC PROCEDURES'.