

# MAGEA9B Antibody - N-terminal region

Rabbit Polyclonal Antibody

Catalog # AI16021

## Product Information

---

<b>Application</b>	WB
<b>Primary Accession</b>	<a href="#">P43362</a>
<b>Other Accession</b>	<a href="#">XP_005278251</a>
<b>Reactivity</b>	Human
<b>Predicted</b>	Human
<b>Host</b>	Rabbit
<b>Clonality</b>	Polyclonal
<b>Calculated MW</b>	35088

## Additional Information

---

<b>Gene ID</b>	4108;728269
<b>Alias Symbol</b> <b>Other Names</b>	MAGEA9B, Melanoma-associated antigen 9, Cancer/testis antigen 1.9, CT1.9, MAGE-9 antigen, MAGEA9, MAGE9, MAGEA9A
<b>Format</b>	Liquid. Purified antibody supplied in 1x PBS buffer with 0.09% (w/v) sodium azide and 2% sucrose.
<b>Reconstitution &amp; Storage</b>	Add 50 $\mu$ l of distilled water. Final Anti-MAGEA9B antibody concentration is 1 mg/ml in PBS buffer with 2% sucrose. For longer periods of storage, store at -20°C. Avoid repeat freeze-thaw cycles.
<b>Precautions</b>	MAGEA9B Antibody - N-terminal region is for research use only and not for use in diagnostic or therapeutic procedures.

## Protein Information

---

<b>Name</b>	MAGEA9
<b>Synonyms</b>	MAGE9, MAGEA9A
<b>Function</b>	Not known, though may play a role in embryonal development and tumor transformation or aspects of tumor progression.
<b>Tissue Location</b>	Expressed in many tumors of several types, such as melanoma, head and neck squamous cell carcinoma, lung carcinoma and breast carcinoma, but not in normal tissues except for testes and placenta

## Background

---

Not known, though may play a role in embryonal development and tumor transformation or aspects of tumor progression.

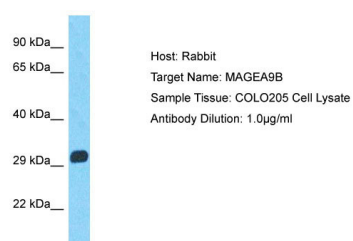
## References

---

De Plaen E.,et al.Immunogenetics 40:360-369(1994).  
Timms K.M.,et al.Hum. Mol. Genet. 6:479-486(1997).  
Zhu J.,et al.Submitted (MAY-2003) to the EMBL/GenBank/DDBJ databases.  
Ota T.,et al.Nat. Genet. 36:40-45(2004).  
Mural R.J.,et al.Submitted (JUL-2005) to the EMBL/GenBank/DDBJ databases.

## Images

---



Host: Rabbit  
Target Name: MAGEA9B  
Sample Tissue: COLO205 Whole cell lysate  
S  
Antibody Dilution: 1.0µg/ml

Please note: All products are 'FOR RESEARCH USE ONLY. NOT FOR USE IN DIAGNOSTIC OR THERAPEUTIC PROCEDURES'.