

# PRAMEF11 Antibody - middle region

Rabbit Polyclonal Antibody  
Catalog # AI16024

## Product Information

---

<b>Application</b>	WB
<b>Primary Accession</b>	<a href="#">O60813</a>
<b>Other Accession</b>	<a href="#">NM_001146344</a> , <a href="#">NP_001139816</a>
<b>Reactivity</b>	Human
<b>Predicted</b>	Human
<b>Host</b>	Rabbit
<b>Clonality</b>	Polyclonal
<b>Calculated MW</b>	55344

## Additional Information

---

<b>Gene ID</b>	440560
<b>Alias Symbol</b>	RP5-845O24.2
<b>Other Names</b>	PRAME family member 11, PRAMEF11
<b>Format</b>	Liquid. Purified antibody supplied in 1x PBS buffer with 0.09% (w/v) sodium azide and 2% sucrose.
<b>Reconstitution &amp; Storage</b>	Add 50 $\mu$ l of distilled water. Final Anti-PRAMEF11 antibody concentration is 1 mg/ml in PBS buffer with 2% sucrose. For longer periods of storage, store at -20°C. Avoid repeat freeze-thaw cycles.
<b>Precautions</b>	PRAMEF11 Antibody - middle region is for research use only and not for use in diagnostic or therapeutic procedures.

## Protein Information

---

<b>Name</b>	PRAMEF11 ( <a href="#">HGNC:14086</a> )
-------------	---

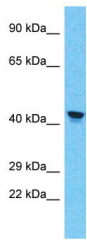
## References

---

Gregory S.G., et al. Nature 441:315-321(2006).  
Rhodes S., et al. Submitted (APR-1999) to the EMBL/GenBank/DDBJ databases.

## Images

---



Host: Rabbit  
Target Name: PRAMEF11  
Sample Tissue: A549 Cell Lysate  
Antibody Dilution: 1.0µg/ml

Host: Rabbit  
Target Name: PRAMEF11  
Sample Tissue: A549 Whole cell lysate  
S  
Antibody Dilution: 1.0µg/ml

Please note: All products are 'FOR RESEARCH USE ONLY. NOT FOR USE IN DIAGNOSTIC OR THERAPEUTIC PROCEDURES'.