

MAP2 Antibody - N-terminal region

Rabbit Polyclonal Antibody

Catalog # AI16038

Product Information

Application	WB
Primary Accession	P11137
Reactivity	Human
Host	Rabbit
Clonality	Polyclonal
Calculated MW	199526

Additional Information

Gene ID	4133
Alias Symbol Other Names	MAP2, Microtubule-associated protein 2, MAP-2, MAP2
Format	Liquid. Purified antibody supplied in 1x PBS buffer with 0.09% (w/v) sodium azide and 2% sucrose.
Reconstitution & Storage	Add 50 μ l of distilled water. Final Anti-MAP2 antibody concentration is 1 mg/ml in PBS buffer with 2% sucrose. For longer periods of storage, store at -20°C. Avoid repeat freeze-thaw cycles.
Precautions	MAP2 Antibody - N-terminal region is for research use only and not for use in diagnostic or therapeutic procedures.

Protein Information

Name	MAP2
Function	The exact function of MAP2 is unknown but MAPs may stabilize the microtubules against depolymerization. They also seem to have a stiffening effect on microtubules.
Cellular Location	Cytoplasm, cytoskeleton. Cell projection, dendrite {ECO:0000250 UniProtKB:P20357}

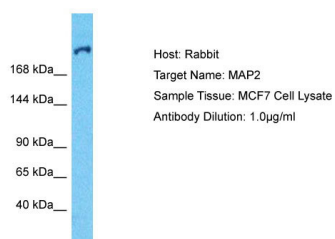
Background

The exact function of MAP2 is unknown but MAPs may stabilize the microtubules against depolymerization. They also seem to have a stiffening effect on microtubules.

References

Price R.,et al.Submitted (SEP-1993) to the EMBL/GenBank/DDBJ databases.
Albala J.S.,et al.Gene 136:377-378(1993).
Hillier L.W.,et al.Nature 434:724-731(2005).
Mural R.J.,et al.Submitted (JUL-2005) to the EMBL/GenBank/DDBJ databases.
Dammerman M.,et al.J. Neurosci. Res. 24:487-495(1989).

Images



Host: Rabbit
Target Name: MAP2
Sample Tissue: MCF7 Whole Cell lysates
Antibody Dilution: 1.0µg/ml

Please note: All products are 'FOR RESEARCH USE ONLY. NOT FOR USE IN DIAGNOSTIC OR THERAPEUTIC PROCEDURES'.