

RPS18 Antibody - C-terminal region

Rabbit Polyclonal Antibody

Catalog # AI16050

Product Information

Application	WB
Primary Accession	P62269
Other Accession	NM_022551 , NP_072045
Reactivity	Human, Mouse, Rat, Rabbit, Dog, Guinea Pig, Horse, Bovine, Neisseria Gonorrhoeae, Yeast
Predicted	Human, Mouse, Rat, Rabbit, Pig, Dog, Guinea Pig, Horse, Bovine, Neisseria Gonorrhoeae, Yeast
Host	Rabbit
Clonality	Polyclonal
Calculated MW	17719

Additional Information

Gene ID	6222
Alias Symbol	D6S218E, HKE3, KE-3, KE3, S18
Other Names	40S ribosomal protein S18, Ke-3, Ke3, RPS18, D6S218E
Format	Liquid. Purified antibody supplied in 1x PBS buffer with 0.09% (w/v) sodium azide and 2% sucrose.
Reconstitution & Storage	Add 50 μ l of distilled water. Final Anti-RPS18 antibody concentration is 1 mg/ml in PBS buffer with 2% sucrose. For longer periods of storage, store at -20°C. Avoid repeat freeze-thaw cycles.
Precautions	RPS18 Antibody - C-terminal region is for research use only and not for use in diagnostic or therapeutic procedures.

Protein Information

Name	RPS18
Synonyms	D6S218E
Function	Component of the small ribosomal subunit. The ribosome is a large ribonucleoprotein complex responsible for the synthesis of proteins in the cell.
Cellular Location	Cytoplasm.

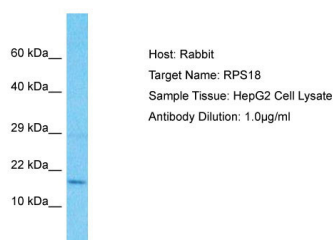
Background

Located at the top of the head of the 40S subunit, it contacts several helices of the 18S rRNA.

References

Chassin D.,et al.Nucleic Acids Res. 21:745-745(1993).
Mungall A.J.,et al.Nature 425:805-811(2003).
Mural R.J.,et al.Submitted (JUL-2005) to the EMBL/GenBank/DDBJ databases.
Bienvenut W.V.,et al.Submitted (NOV-2006) to UniProtKB.
Vladimirov S.N.,et al.Eur. J. Biochem. 239:144-149(1996).

Images



Host: Rabbit
Target Name: RPS18
Sample Tissue: HepG2 Cell Lysate
Antibody Dilution: 1.0µg/ml

Host: Rabbit
Target Name: RPS18
Sample Tissue: HepG2 Whole cell lysate
S
Antibody Dilution: 1.0µg/ml

Please note: All products are 'FOR RESEARCH USE ONLY. NOT FOR USE IN DIAGNOSTIC OR THERAPEUTIC PROCEDURES'.