

# NR1I3 Antibody - C-terminal region

Rabbit Polyclonal Antibody

Catalog # AI16055

## Product Information

---

Application	WB
Primary Accession	<a href="#">Q14994</a>
Reactivity	Human
Host	Rabbit
Clonality	Polyclonal
Calculated MW	39942

## Additional Information

---

Gene ID	9970
Alias Symbol Other Names	NR1I3, CAR, Nuclear receptor subfamily 1 group I member 3, Constitutive activator of retinoid response, Constitutive active response, Constitutive androstane receptor, CAR, Orphan nuclear receptor MB67, NR1I3, CAR
Format	Liquid. Purified antibody supplied in 1x PBS buffer with 0.09% (w/v) sodium azide and 2% sucrose.
Reconstitution & Storage	Add 50 $\mu$ l of distilled water. Final Anti-NR1I3 antibody concentration is 1 mg/ml in PBS buffer with 2% sucrose. For longer periods of storage, store at -20°C. Avoid repeat freeze-thaw cycles.
Precautions	NR1I3 Antibody - C-terminal region is for research use only and not for use in diagnostic or therapeutic procedures.

## Protein Information

---

Name	NR1I3
Synonyms	CAR
Function	Binds and transactivates the retinoic acid response elements that control expression of the retinoic acid receptor beta 2 and alcohol dehydrogenase 3 genes. Transactivates both the phenobarbital responsive element module of the human CYP2B6 gene and the CYP3A4 xenobiotic response element.
Cellular Location	Nucleus. Cytoplasm. Cytoplasm, cytoskeleton. Note=Recruited to the cytoplasm by DNAJC7.
Tissue Location	Predominantly expressed in liver.

## Background

---

Binds and transactivates the retinoic acid response elements that control expression of the retinoic acid receptor beta 2 and alcohol dehydrogenase 3 genes. Transactivates both the phenobarbital responsive element module of the human CYP2B6 gene and the CYP3A4 xenobiotic response element.

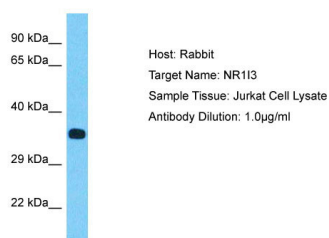
## References

---

Baes M.,et al.Mol. Cell. Biol. 14:1544-1552(1994).  
Lamba J.K.,et al.J. Pharmacol. Exp. Ther. 311:811-821(2004).  
Zhou G.,et al.Submitted (APR-2005) to the EMBL/GenBank/DDBJ databases.  
Kaighin V.A.,et al.Submitted (DEC-2010) to the EMBL/GenBank/DDBJ databases.  
Gregory S.G.,et al.Nature 441:315-321(2006).

## Images

---



Host: Rabbit  
Target Name: NR1I3  
Sample Tissue: Jurkat Cell Lysate  
Antibody Dilution: 1.0µg/ml

Host: Rabbit  
Target Name: NR1I3  
Sample Tissue: Jurkat Whole cell lysate  
S  
Antibody Dilution: 1.0µg/ml

Please note: All products are 'FOR RESEARCH USE ONLY. NOT FOR USE IN DIAGNOSTIC OR THERAPEUTIC PROCEDURES'.