

CDK10 Antibody - C-terminal region

Rabbit Polyclonal Antibody

Catalog # AI16062

Product Information

Application	WB
Primary Accession	Q15131
Reactivity	Human
Host	Rabbit
Clonality	Polyclonal
Calculated MW	41038

Additional Information

Gene ID	8558
Alias Symbol Other Names	CDK10, Cyclin-dependent kinase 10, 2.7.11.22, Cell division protein kinase 10, Serine/threonine-protein kinase PISSLRE, CDK10
Format	Liquid. Purified antibody supplied in 1x PBS buffer with 0.09% (w/v) sodium azide and 2% sucrose.
Reconstitution & Storage	Add 50 μ l of distilled water. Final Anti-CDK10 antibody concentration is 1 mg/ml in PBS buffer with 2% sucrose. For longer periods of storage, store at -20°C. Avoid repeat freeze-thaw cycles.
Precautions	CDK10 Antibody - C-terminal region is for research use only and not for use in diagnostic or therapeutic procedures.

Protein Information

Name	CDK10
Function	Cyclin-dependent kinase that phosphorylates the transcription factor ETS2 (in vitro) and positively controls its proteasomal degradation (in cells) (PubMed: 24218572). Involved in the regulation of actin cytoskeleton organization through the phosphorylation of actin dynamics regulators such as PKN2. Is a negative regulator of ciliogenesis through phosphorylation of PKN2 and promotion of RhoA signaling (PubMed: 27104747).
Cellular Location	Cytoplasm, cytoskeleton, cilium basal body

Background

Cyclin-dependent kinase that phosphorylates the transcription factor ETS2 (in vitro) and positively controls its proteasomal degradation (in cells).

References

Grana X.,et al.Oncogene 9:2097-2103(1994).

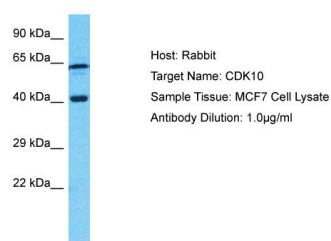
Grana X.,et al.Submitted (JUN-2000) to the EMBL/GenBank/DDBJ databases.

Brambilla R.,et al.Oncogene 9:3037-3041(1994).

Crawford J.,et al.Genomics 56:90-97(1999).

Ota T.,et al.Nat. Genet. 36:40-45(2004).

Images



Host: Rabbit
Target Name: CDK10
Sample Tissue: MCF7 Whole cell lysate
s
Antibody Dilution: 1.0µg/ml

Please note: All products are 'FOR RESEARCH USE ONLY. NOT FOR USE IN DIAGNOSTIC OR THERAPEUTIC PROCEDURES'.