

NAV2 Antibody - C-terminal region

Rabbit Polyclonal Antibody

Catalog # AI16063

Product Information

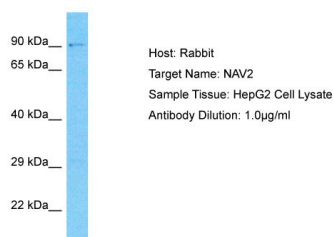
| | |
|--------------------------|--------------------------------------------------------|
| Application | WB |
| Primary Accession | Q8IVL1-6 |
| Reactivity | Human, Mouse, Rat, Pig, Dog, Guinea Pig, Horse, Bovine |
| Predicted | Human, Mouse, Rat, Pig, Dog, Guinea Pig, Horse, Bovine |
| Host | Rabbit |
| Clonality | Polyclonal |
| Calculated MW | 96 kDa |

Additional Information

| | |
|-------------------------------------|-----------------------------------------------------------------------------------------------------------------------------------------------------------------------------------------------------|
| Alias Symbol | NAV2, HELAD1, KIAA1419, POMFIL2, RAINB1, STEERIN2, |
| Format | Liquid. Purified antibody supplied in 1x PBS buffer with 0.09% (w/v) sodium azide and 2% sucrose. |
| Reconstitution & Storage | Add 50 μ l of distilled water. Final Anti-NAV2 antibody concentration is 1 mg/ml in PBS buffer with 2% sucrose. For longer periods of storage, store at -20°C. Avoid repeat freeze-thaw cycles. |
| Precautions | NAV2 Antibody - C-terminal region is for research use only and not for use in diagnostic or therapeutic procedures. |

Protein Information

Images



Host: Rabbit
Target Name: NAV2
Sample Tissue: HepG2 Whole cell lysate
S
Antibody Dilution: 1.0 μ g/ml

Please note: All products are 'FOR RESEARCH USE ONLY. NOT FOR USE IN DIAGNOSTIC OR THERAPEUTIC PROCEDURES'.