

SH3GL3 Antibody - middle region

Rabbit Polyclonal Antibody

Catalog # AI16064

Product Information

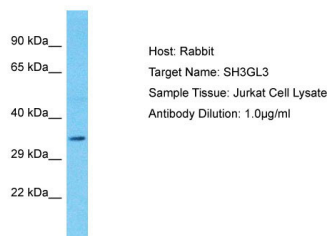
| | |
|--------------------------|--------------------------|
| Application | WB |
| Primary Accession | Q99963-2 |
| Reactivity | Human |
| Host | Rabbit |
| Clonality | Polyclonal |
| Calculated MW | 30 kDa |

Additional Information

| | |
|-------------------------------------|---|
| Alias Symbol | SH3GL3, CNSA3, SH3D2C, |
| Format | Liquid. Purified antibody supplied in 1x PBS buffer with 0.09% (w/v) sodium azide and 2% sucrose. |
| Reconstitution & Storage | Add 50 μ l of distilled water. Final Anti-SH3GL3 antibody concentration is 1 mg/ml in PBS buffer with 2% sucrose. For longer periods of storage, store at -20°C. Avoid repeat freeze-thaw cycles. |
| Precautions | SH3GL3 Antibody - middle region is for research use only and not for use in diagnostic or therapeutic procedures. |

Protein Information

Images



Host: Rabbit
Target Name: SH3GL3
Sample Tissue: Jurkat Whole cell lysate
S
Antibody Dilution: 1.0 μ g/ml

Please note: All products are 'FOR RESEARCH USE ONLY. NOT FOR USE IN DIAGNOSTIC OR THERAPEUTIC PROCEDURES'.